

ROUTLEDGE FOCUS

BALTIMORE:  
REINVENTING AN  
INDUSTRIAL LEGACY CITY

and  
what it means  
for Transit

Klaus Philipsen

ROUTLEDGE  
Focus



*Baltimore: Reinventing an Industrial Legacy City* is an exploration into the reinvention, self-reflection and boosterism of US legacy cities, taking Baltimore as the case study model to reveal the larger narrative. Author Klaus Philipsen investigates the modern urban condition and the systemic problems involved with adapting metropolitan regions into equitable and sustainable communities, covering topics such as growth, urban sprawl, the depletion of cities, social justice, smart city and open data, transportation, community development, sustainability and diversity. Baltimore's

1. We have a good DNA for transit
2. We know how to build transit

To pivot.....



# We need to understand where we are ....

*Legacy cities will benefit the most from the next transportation revolution.*

Baltimore's transit system is currently holding the city back. The case study of the Baltimore Red Line shows how much modern transit has become a political football of politicians in much the same way as high-speed rail in the United States has become one on the national stage. But sometimes being behind can be an opportunity to jump to the head of the line.



-1. Baltimore Region rapid transit system routes and station locations.



# 2032?

# we need to....

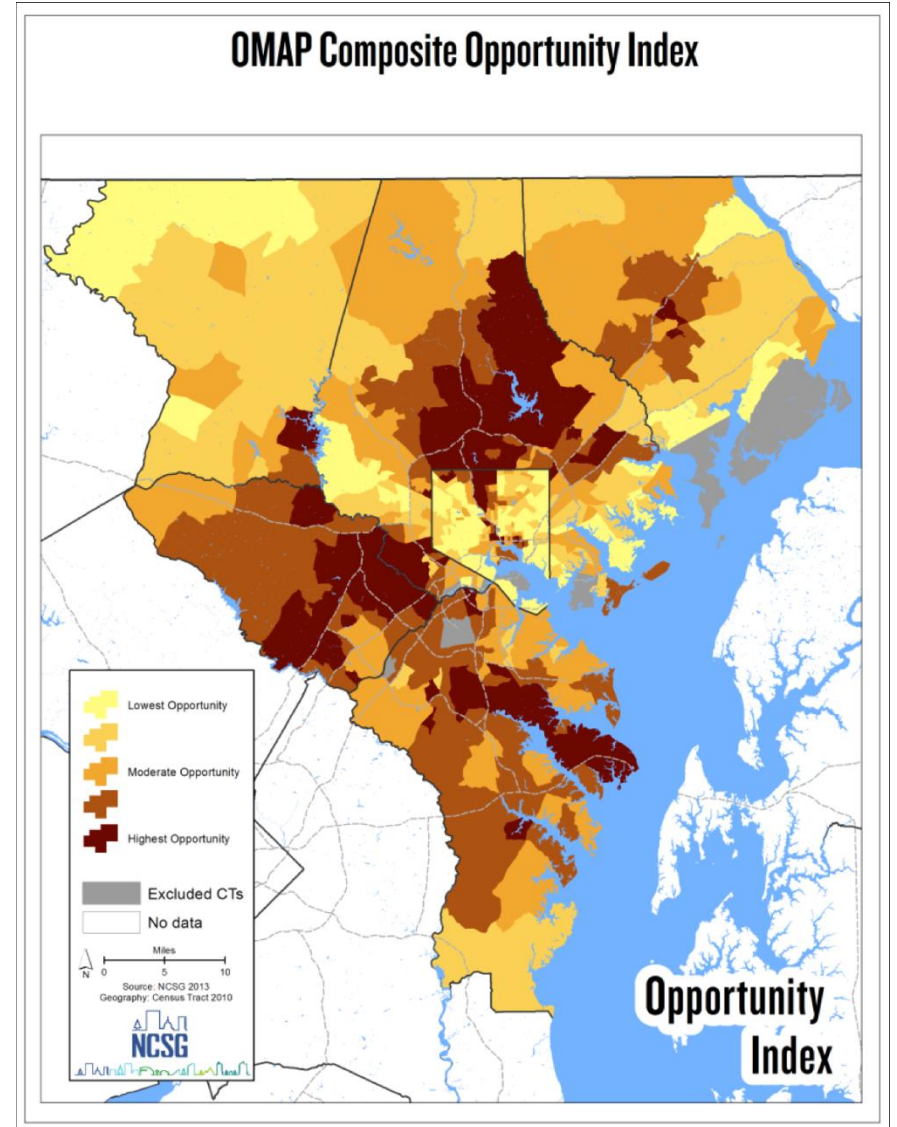
1. Change the discussion from bricks and mortar to equity
2. achieve equity through systems more than modes or lines
3. See the future as something different than an extension of the past



# 1. Change the discussion from bricks and mortar to equity and social justice



2. achieve equity  
through  
systems  
more  
than  
modes or lines



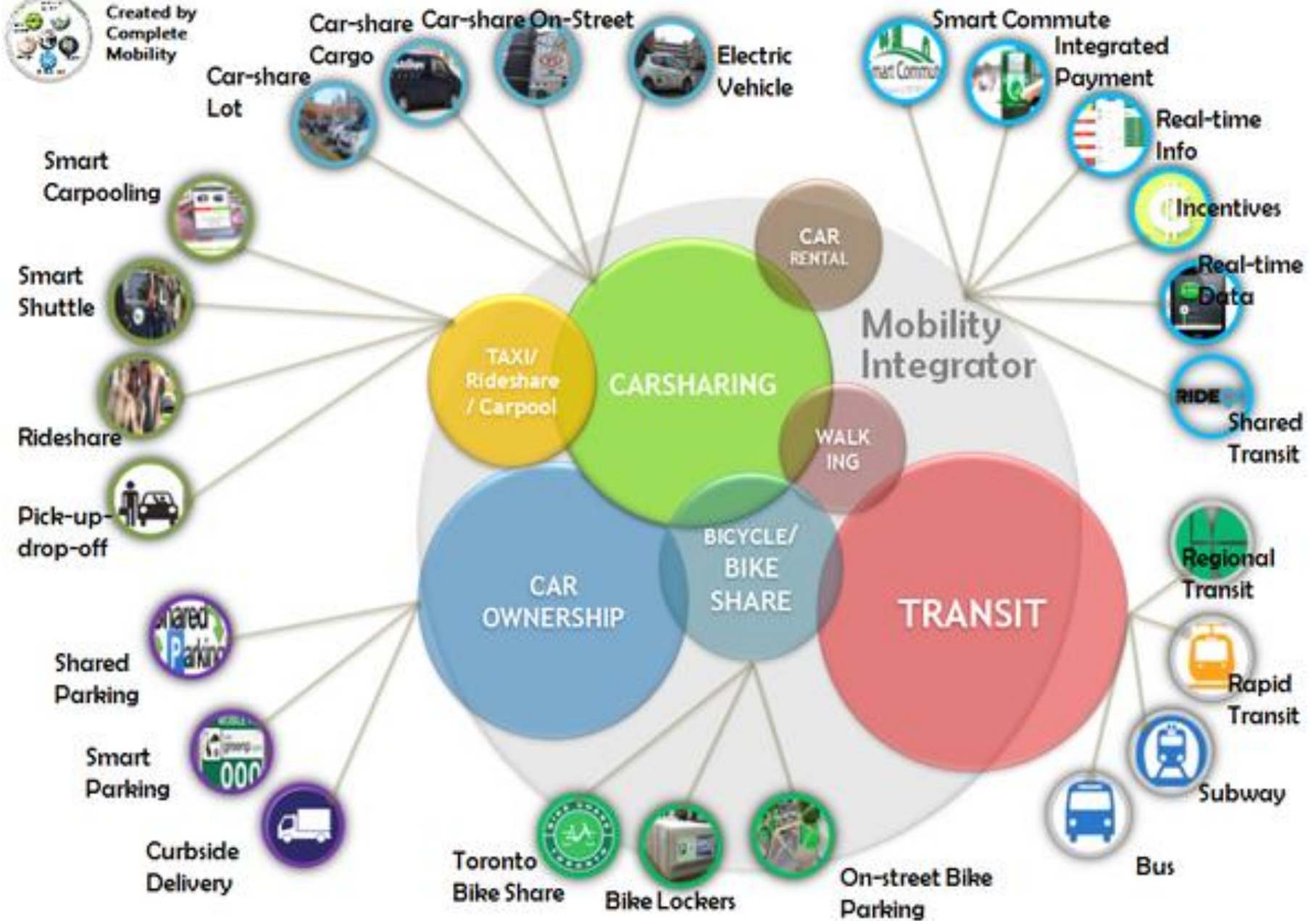


### 3. See the future as something different than an extension of the past





Created by Complete Mobility



Thank you!

