



MARYLAND DEPARTMENT OF TRANSPORTATION

MARYLAND TRANSIT ADMINISTRATION



DEPARTMENT OF TRANSPORTATION  
BALTIMORE CITY

# RAISE Transit Priority Project

TRANSIT CHOICES PRESENTATION

MARCH 24, 2022



# Project Partners

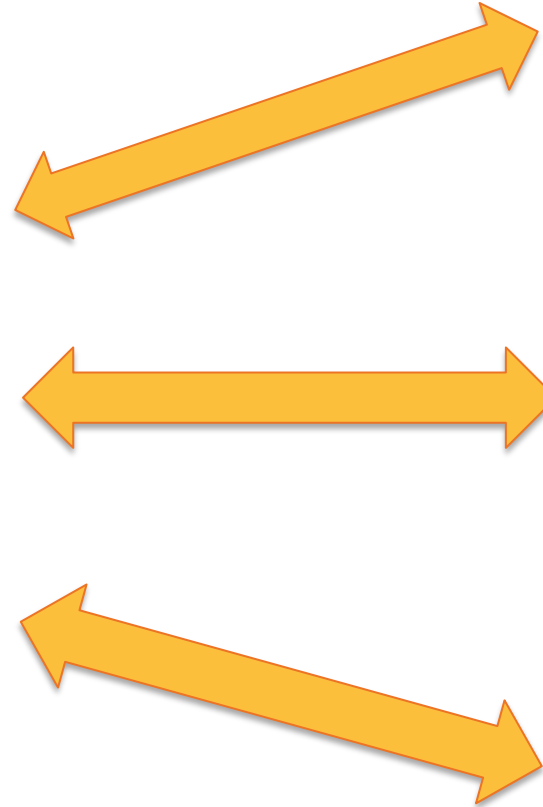
## PROJECT LEADS



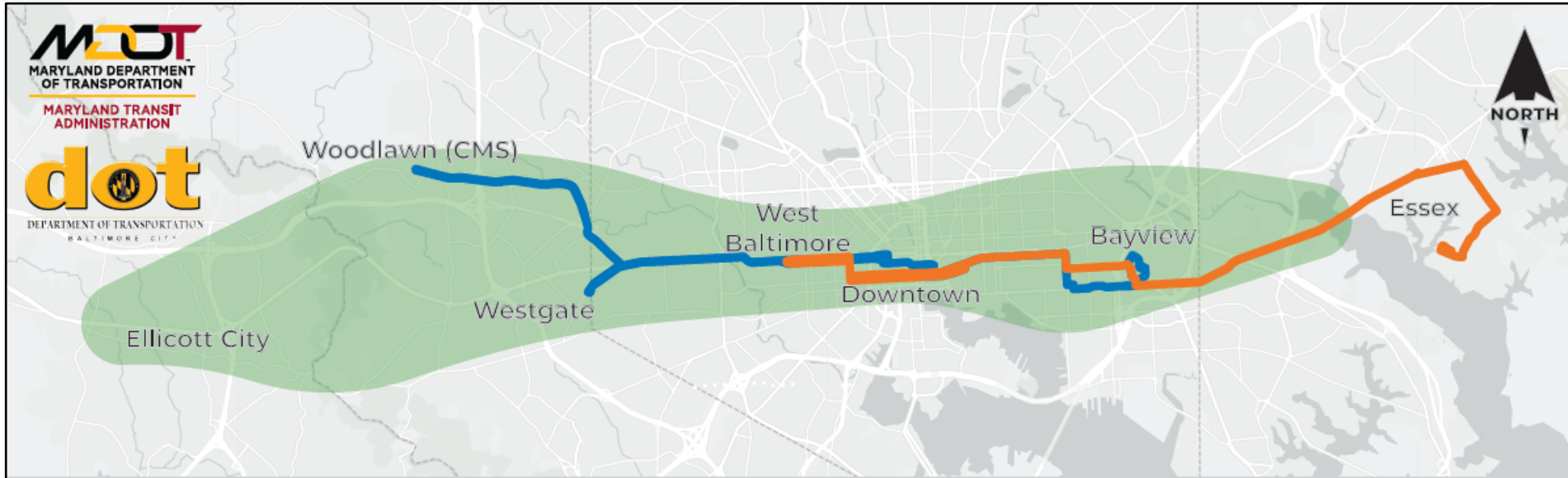
**COMMUNITY  
ADVISORY PANEL**  
Community Associations  
Advocacy Groups  
Other Key Stakeholders

**INTERAGENCY  
COMMITTEE**  
State & Local Government  
Elected Officials

**PUBLIC OUTREACH**  
Transit Riders  
Pedestrians & Bicyclists  
Schools



# East-West Corridor Efforts



Short Term  
(1-2 Years)

**MDOT MTA  
Annual Service  
Changes**



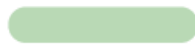
MDOT MTA regularly evaluates route alignments, scheduling and bus stop locations during three yearly service changes. Major service changes occur each Fall. Reliable East-West service is a priority for its annual service planning and a goal of the Regional Transit Plan is to 'introduce limited-stop service where appropriate'.

Mid Term  
(3-5 Years)



\$50M investment of City, State, and Federal dollars to add dedicated bus lanes, transit signal priority, real-time signage, sidewalk, and accessibility improvements for the CityLink Blue and CityLink Orange.

Long Term  
(5-10 Years)



Future transit service with dedicated guideway and additional infrastructure. Bus rapid transit, light rail, and heavy rail alternatives are under consideration across multiple alignments.

# RAISE Grant Status

View RAISE GRANT documents at:

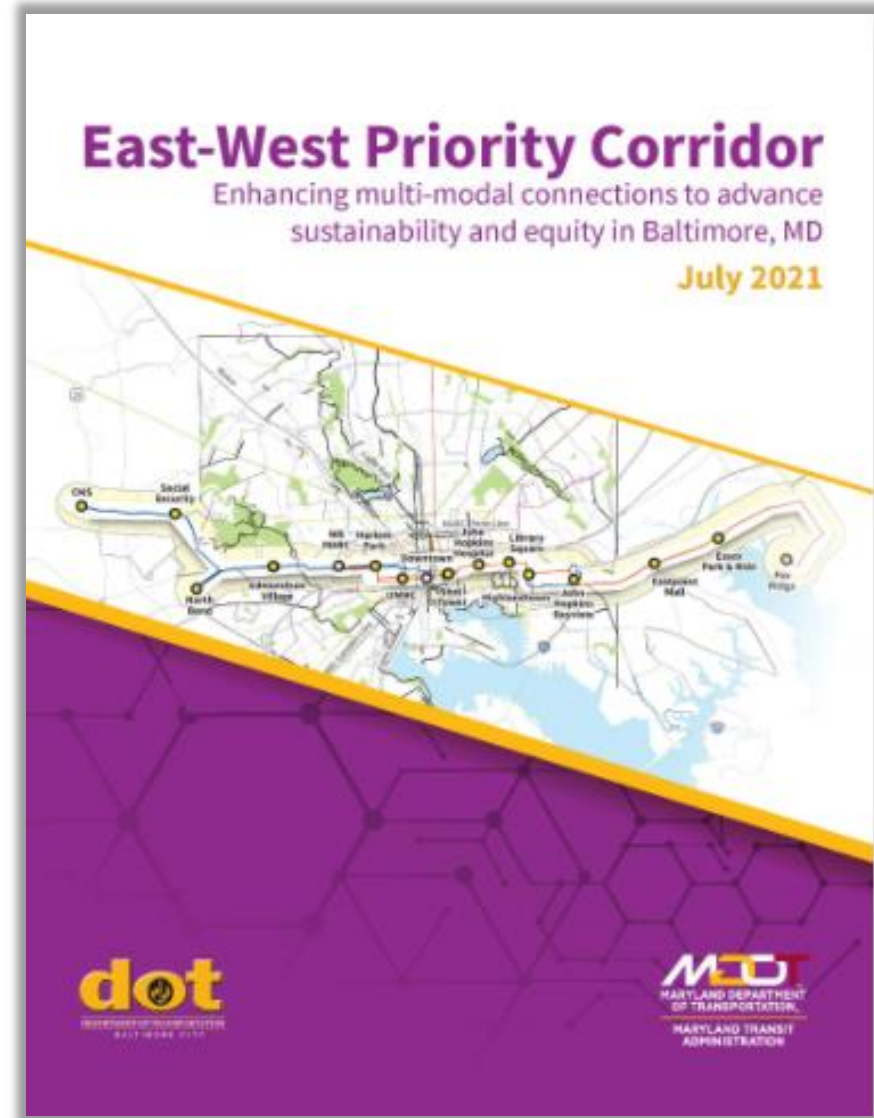
[RAISEBaltimore.com](https://RAISEBaltimore.com)

[Project Narrative \(PDF\)](#)

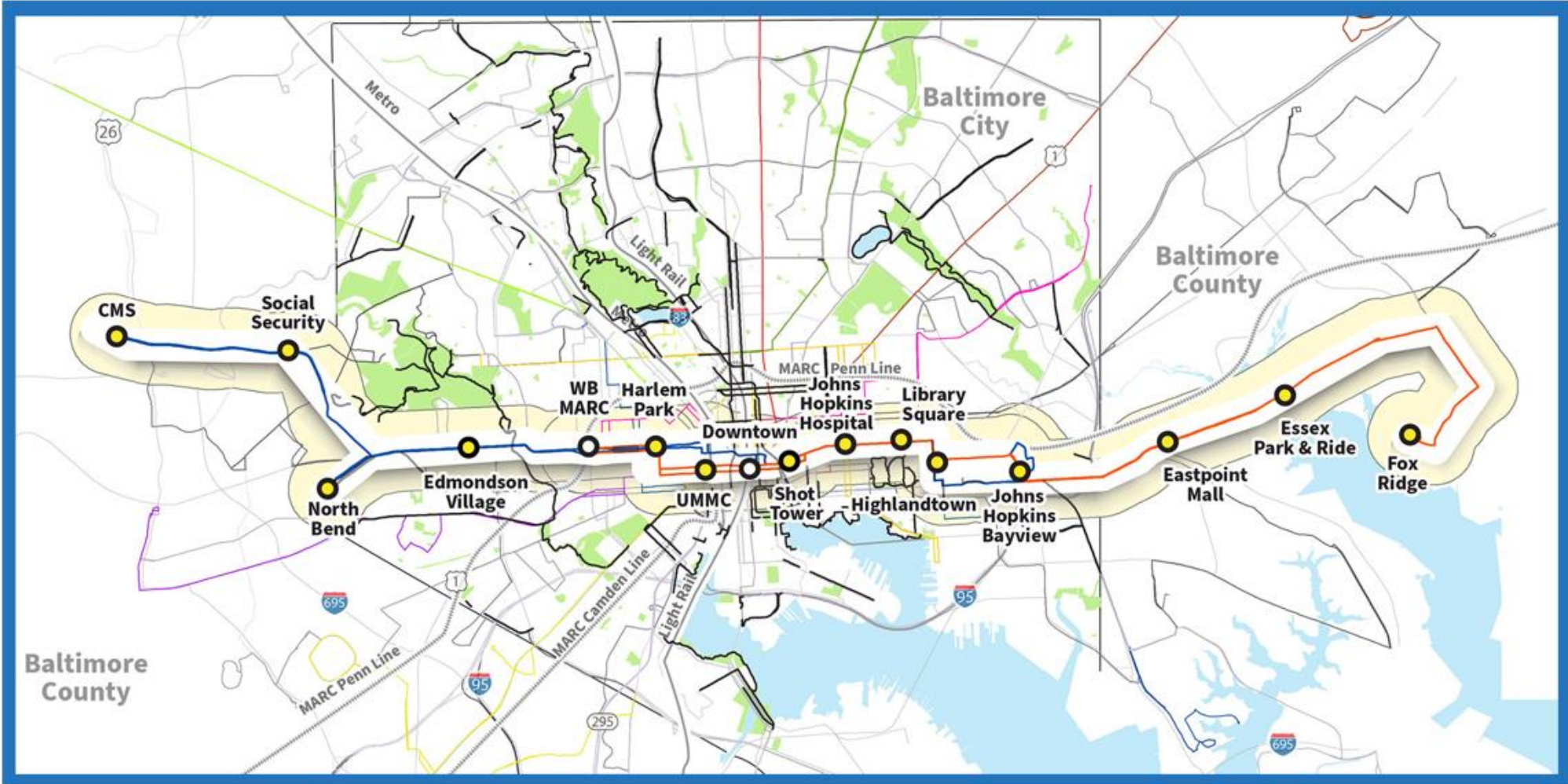
[Benefit-Cost-Analysis \(PDF\)](#)

[Letters of Support \(PDF\)](#)

[News Coverage Report November 2021](#)



# RAISE Project Corridor



# RAISE Project Corridor Significance

- Improve connectivity and reliability along two of the **highest ridership** routes (CityLink Blue and CityLink Orange).
- Provide faster, safer, and more reliable transit to the **carless households, minority households, and other transit dependent riders** using this corridor.
- Expand transit access to the more than **180,000 jobs** in the region
- Improve **pedestrian and bus safety**. In 2019, 111 crashes involving a bus occurred.

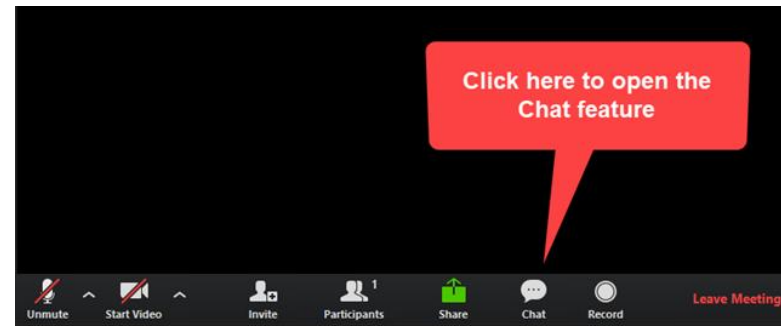


# RAISE Project Objectives

- **Improve** transit reliability, accessibility and comfort
- **Attract** new riders to transit
- **Connect** emerging development to regional transit
- **Improve** safety and accessibility
- **Create** safe cycling connections
- **Strengthen** neighborhood revitalization efforts
- **Align** efforts with MDOT MTA's Sustainability Program & statewide climate change adaptation efforts



# RAISE – Chat Question



What **transportation improvements** do you think are needed within the RAISE project corridor?


(Please put your answers in the CHAT box.)

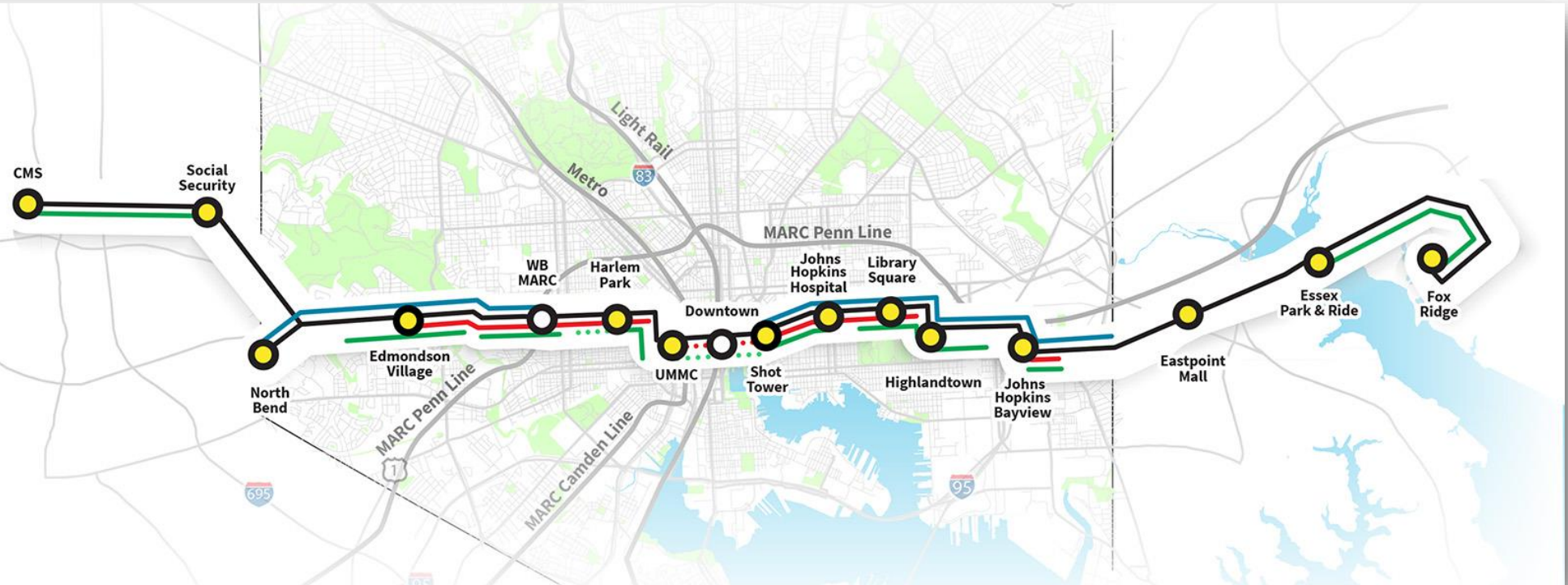




# RAISE Project Elements

## LEGEND

-  Hub Improvements 
-  Dedicated Bus Lanes 
-  Transit Signal Priority 
-  Pedestrian and Bicycle Safety Investments 
-  Bus Stop Enhancements 
-  Complimentary Investment 



# Dedicated Bus Lanes (DBLs)

- **What are DBLs?**
  - Convert travel or parking lanes to bus-only lanes identified by pavement markings, red paint, and signage
- **Where would DBLs be installed?**
  - Along at least 10 lane-miles of CityLink Blue & CityLink Orange bus routes
- **What are the benefits of DBLs?**
  - Reduced transit delay & conflicts between buses and vehicles
  - Increased on-time performance
  - Allows shared use with bicycles



## Potential time savings in RAISE Project corridor:

- up to 1,050 hours of travel time savings for transit riders/day & up to 262,387 hours/year

## Projected crash reductions in RAISE Project corridor:

- 10 miles of DBLs projected to lead to reduction of about about 13 bus crashes per year

# Transit Signal Priority (TSP)

## What is TSP?

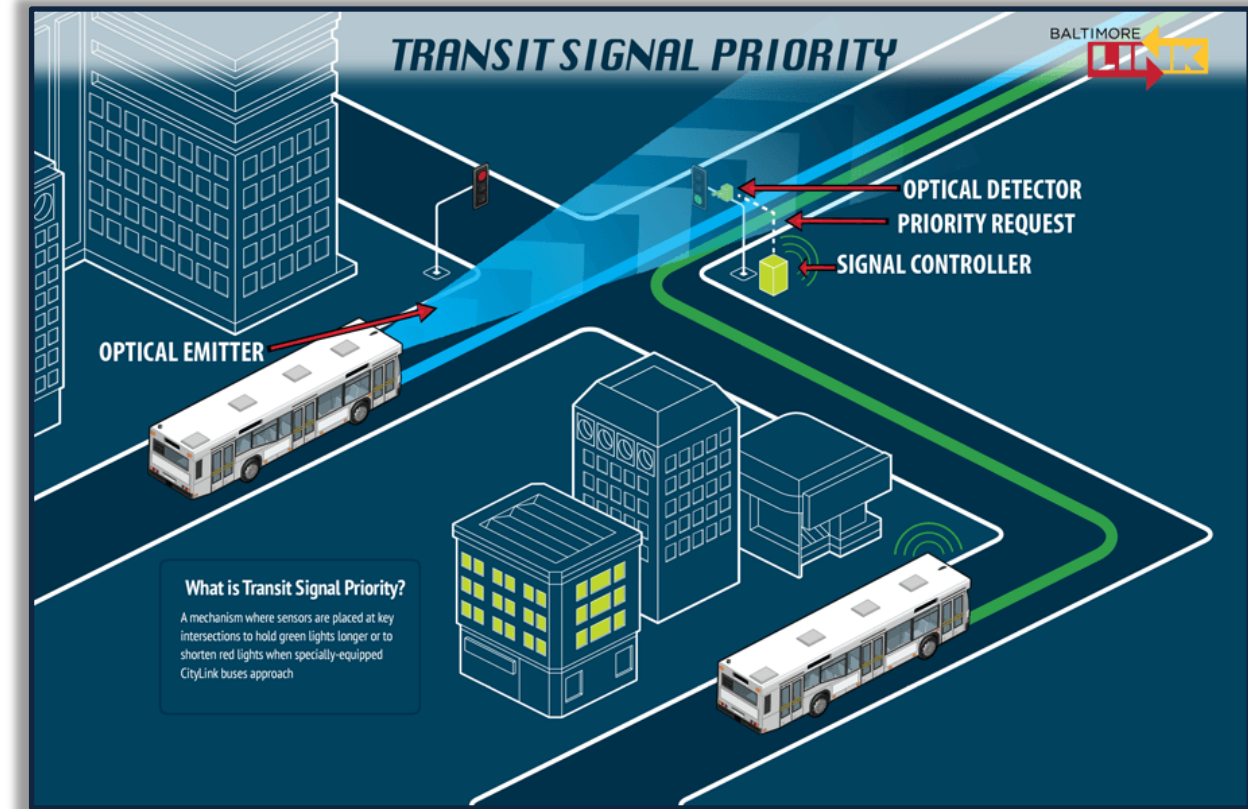
- Traffic control for faster transit
- A green light will be held longer, or a red light will be made shorter so buses can pass through intersection

## Where would TSP be implemented?

- Along at least 10 lane-miles of **Dedicated Bus Lanes**

## What are the benefits of TSP?

- Faster bus travel through intersections
- Improved reliability
- Reduced transit delay
- Increased on-time performance



*Run times dropped up to 20% along certain segments with **TSP** in peak hours (2018)*

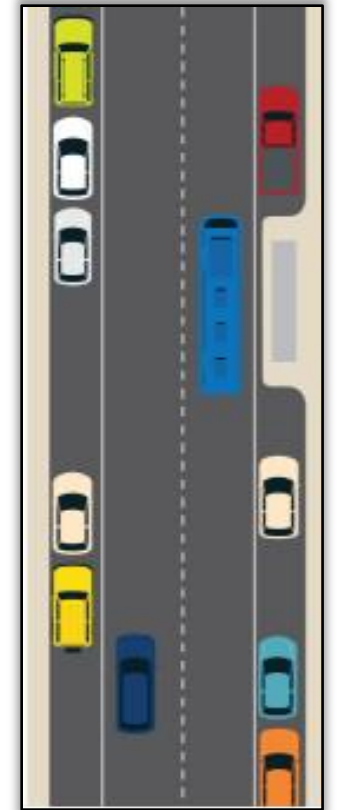
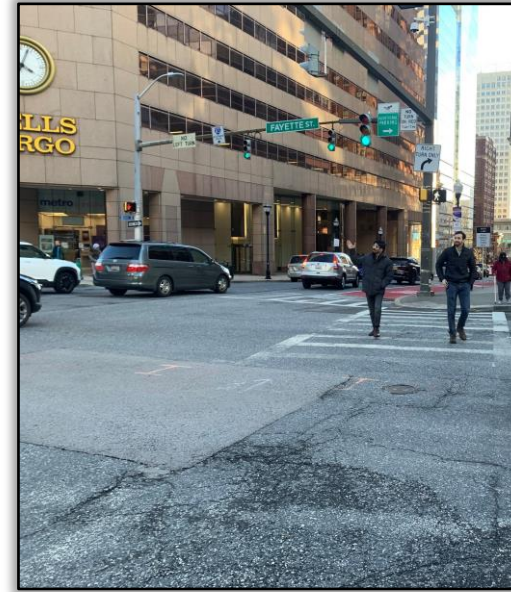
# Bus Stop Enhancement & Hubs

- **Improvements at 100+ bus stops**
  - ADA compliance upgrades
  - Bus shelters
  - Benches
  - Trash cans
  - Pedestrian lighting
- **Wayfinding & real-time signs at high-transfer activity 'hubs'**
  - Bus route destinations, frequencies, estimated arrival times
  - Buses have GPS systems to share real-time data through a mobile app



# Pedestrian & Bicycle Safety

- Reduce pedestrian crossing distance
- Trees, lighting and other sidewalk improvements
- ADA Improvements
- Bicycle infrastructure between Downtown Baltimore and West Baltimore MARC commuter rail station



# Electric Vehicle (EV) Charging Stations

- **RAISE** Project corridor intersects five MD EV Ready corridors
- BGE to **install at least 25 EV charging stations** in publicly-owned parking lots and public ROW along the project corridor
- 30% of new chargers are required to be **installed within “Equity Zones”** (underserved areas)
- Advance goals of the MDOT Greenhouse Gas Reduction Act Plan by **reducing GHG emissions**



Photo source: <https://pluginsites.org/bge-charging-stations-at-library-in-ellcott-city-md/>

# Renderings

## Edmondson Avenue East of Old Frederick Road



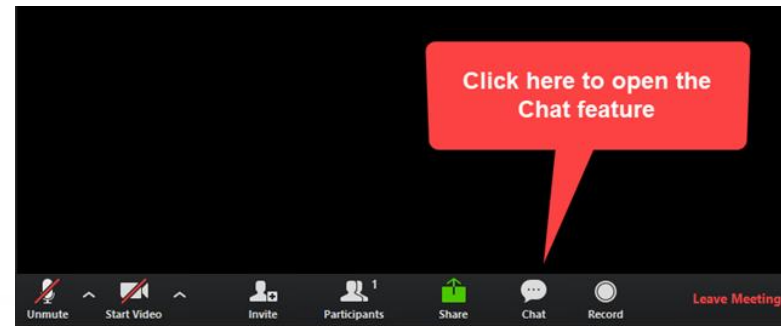
# Renderings

Fayette Street  
east of Front  
Street





# RAISE – Chat Question

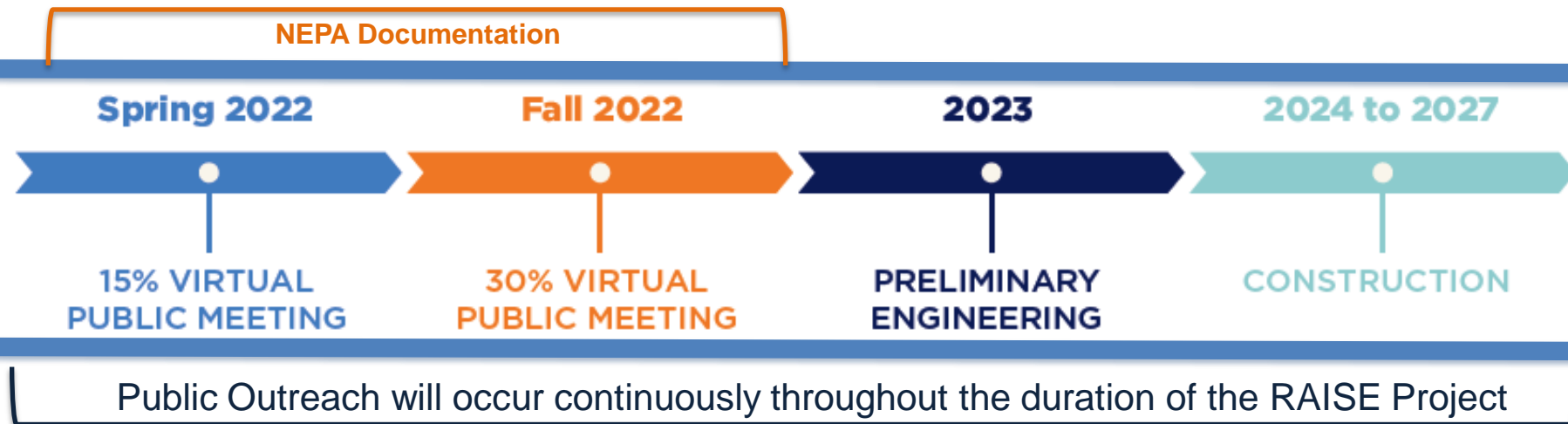


Are there any **elements we have missed** that you want to see considered?



# Environmental Studies

- Projects using federal funds must comply with **NEPA**
- NEPA is the **National Environmental Policy Act**
- Identification and documentation of potential resource impacts
  - Cultural Resources
  - Natural Resources
  - Socio-economic
  - Environmental Justice



# Public Outreach

- **Pop-Up Meetings & Street Teams**
  - Located at transit stops and community events
    - Kiosk / Fact Sheet / FAQs / Survey
    - Interactive Web Map
- **Student Outreach**
  - Identified five High Schools in RAISE Project corridor
    - ✓ Edmondson, Excel, Dunbar, Woodlawn, Patterson
  - Develop relationships with students & staff members



**INVITE US TO  
YOUR  
MEETINGS!**

# Public Outreach

- **CAP & IAC Meetings**
  - Held March 1 and March 3
- **Virtual Public Meetings (ZOOM)**
  - **Wednesday March 30 at 6 p.m.**
- **Webpage**
  - Fact Sheet / FAQs
  - Online Comment Form
  - Interactive Web Map
  - Project Survey (Survey Monkey)
  - Title VI Survey
- **E-Blasts**
- **Social Media**
- **MVA Monitor Ad**

The RAISE Project is a collaborative effort between the Maryland Department of Transportation Maryland Transit Administration (MDOT MTA) and the Baltimore City Department of Transportation (BCDOT) with the assistance of MDOT SHA, Baltimore County and BGE. The project will focus on infrastructure improvements along the CityLink Blue and CityLink Orange lines to provide faster, more reliable transit and improved pedestrian safety.

HOME CONTACT US

### RAISE PROJECT CORRIDOR

The 20-mile corridor connects communities from its western terminus in Baltimore County at the Centers for Medicare and Medicaid Services (CMS), through Baltimore City, including downtown Baltimore, to the Fox Ridge community in Eastern Baltimore County.

The Rebuilding American Infrastructure with Sustainability and Equity (RAISE) Transit Priority Project – or RAISE Project for short – is a collaborative effort between the state of Maryland and the Baltimore City Department of Transportation (BCDOT) with the assistance of other agencies such as the Maryland Department of Transportation State Highway Administration (MDOT SHA), Baltimore County and BGE. The RAISE Project will enhance access and mobility to essential services, jobs, health care and schools along a 20-mile corridor currently served by the CityLink Blue and CityLink Orange lines extending from the Western terminus of CMS in Baltimore County through Baltimore City and ending at the Eastern Terminus of Fox Ridge in Baltimore County.

The project proposes enhancements to provide faster, more reliable transit and improved pedestrian safety. The project will evaluate more than 10 miles of Dedicated Bus Lanes (DBLs), Transit Signal Priority (TSP), real-time signage, upgraded bus shelters, enhanced pedestrian and bicycle safety, and installation of additional electric vehicle charging stations along the project corridor.

The \$90 million RAISE Project is financed through a combination of Federal, State and local funding, including \$20 million from the US Department of Transportation's 2021 RAISE grant program, as well as a \$20 million investment from MDOT and \$50 million from BCDOT. Below are links to the successful RAISE grant project.

**DID YOU KNOW?**

17,000

More than 17,000 households do not have access to private vehicles.

The RAISE Project is a collaborative effort between the Maryland Department of Transportation Maryland Transit Administration (MDOT MTA) and the Baltimore City Department of Transportation (BCDOT) with the assistance of MDOT SHA, Baltimore County and BGE. The project will focus on infrastructure improvements along the CityLink Blue and CityLink Orange lines to provide faster, more reliable transit and improved pedestrian safety.

HOME CONTACT US

### CONTACT US

If you have any questions or concerns related to the RAISE Transit Priority Project, please contact us at [info@RAISEBaltimore.com](mailto:info@RAISEBaltimore.com) or call us at 443-317-9793.

We know that not everyone will be able to attend our virtual public meetings, so we recently built a portable information kiosk to keep people up-to-date with the most recent project news. We are currently bringing the kiosk to community institutions all along the RAISE project corridor. If you would like the project team to bring the kiosk to your location for a single event or for a multi-day stay, please send an email to [info@RAISEBaltimore.com](mailto:info@RAISEBaltimore.com).

Comment Form

To provide a comment and/or to join the mailing list please fill out the form below.

First Name \*

Last Name \*

Email \*

Comments \*

Please send me project updates via:

Email

Text

# Interactive Mapping: ArcGIS Online

**RAISE BALTIMORE**  
TRANSIT PRIORITY PROJECT

**Comments and Concerns**  
If there's a location where you'd like to comment, please add it to the map by following the steps below.

**To Add a Feature to the Map**

1. Select an icon from the menu bar on the right
2. Click on the map where you want to add the feature
3. Fill in the pop-up with any additional comments that you may have about this suggestion
4. Click Save to finalize the addition

To change the basemap and turn layers on or off, use the different icons located at the top left of the map on the right of this sidebar.

We appreciate your time and input!

*Proposed Dedicated Bus Lane Segments are not finalized and subjected to change as design advances.*

**Legend**

- CityLink Bus Stops**
  - Orange Line
  - Blue Line
  - Orange + Blue Line
- Proposed Dedicated Bus Lane**
- Existing Dedicated Bus Lane**
- Project Study Area**

**Comment / Concern Examples**

- Bus Stop Amenities**
  - Bench shelter, real-time signage, lighting, etc.
- Bus Operations**
  - Blockage of travel lanes (i.e. illegal parking/loading, "blocking the box")
  - Delays at bus stops (i.e. loading/unloading, bus stop crowding, bus bunching)
  - Delays at traffic signals (i.e. signal progression)
- Traffic Congestion**
  - Long queues, Traffic spills back / blocks intersections, Multiple greens to get through intersection
- Ped/Bike Facilities**
  - Missing marked crosswalks, Lack of lighting on sidewalks, Uncomfortable walking/biking conditions (i.e. level of stress)

powered by **esri**

## Features

- 24/7 Online Accessibility
- Street Teams document comments
- Record CAP & IAC comments
- Instructions
- Legend
- Push Pins

[Visit ArcGIS Online](https://www.raisebaltimore.com)

# RAISE Project Schedule

NEPA Documentation

Spring 2022

Fall 2022

2023

2024 to 2027



CAP / IAC  
Mtg. #1



15% VIRTUAL  
PUBLIC MEETING



CAP / IAC  
Mtg. #2



30% VIRTUAL  
PUBLIC MEETING

PRELIMINARY  
ENGINEERING

CONSTRUCTION

Public Outreach will occur continuously throughout the duration of the RAISE Project



Street Teams will visit the RAISE Project corridor to distribute project information, talk to stakeholders and administer surveys/questionnaires.



# Questions & Answers

# Contact Information

**Tabia Gamble**

**MDOT MTA Project Manager**

[TGamble1@mdot.Maryland.gov](mailto:TGamble1@mdot.Maryland.gov)

**Theodore Krolik**

**MDOT MTA Chief of Engagement**

[TKrolik@mdot.Maryland.gov](mailto:TKrolik@mdot.Maryland.gov)

**Bart Plano**

**MDOT MTA Title VI Officer**

[BPlano@mdot.Maryland.gov](mailto:BPlano@mdot.Maryland.gov)

**Montrae Jones**

**BCDOT Liaison**

[Montrae.Jones@baltimorecity.gov](mailto:Montrae.Jones@baltimorecity.gov)

**General transit  
questions?**

**Call the  
MDOT MTA:  
410-539-5000**

**To view, download and share project information, visit the Project Webpage:**

[RAISEBaltimore.com](http://RAISEBaltimore.com)

**Ask a question or leave a comment for the Project Team by Email or phone:**

[info@RAISEBaltimore.com](mailto:info@RAISEBaltimore.com)

(443) 317-9793