



# Baltimore Penn Station

Presentation to Transit Choices



# Leveraging Amtrak Investment in Northeast Corridor



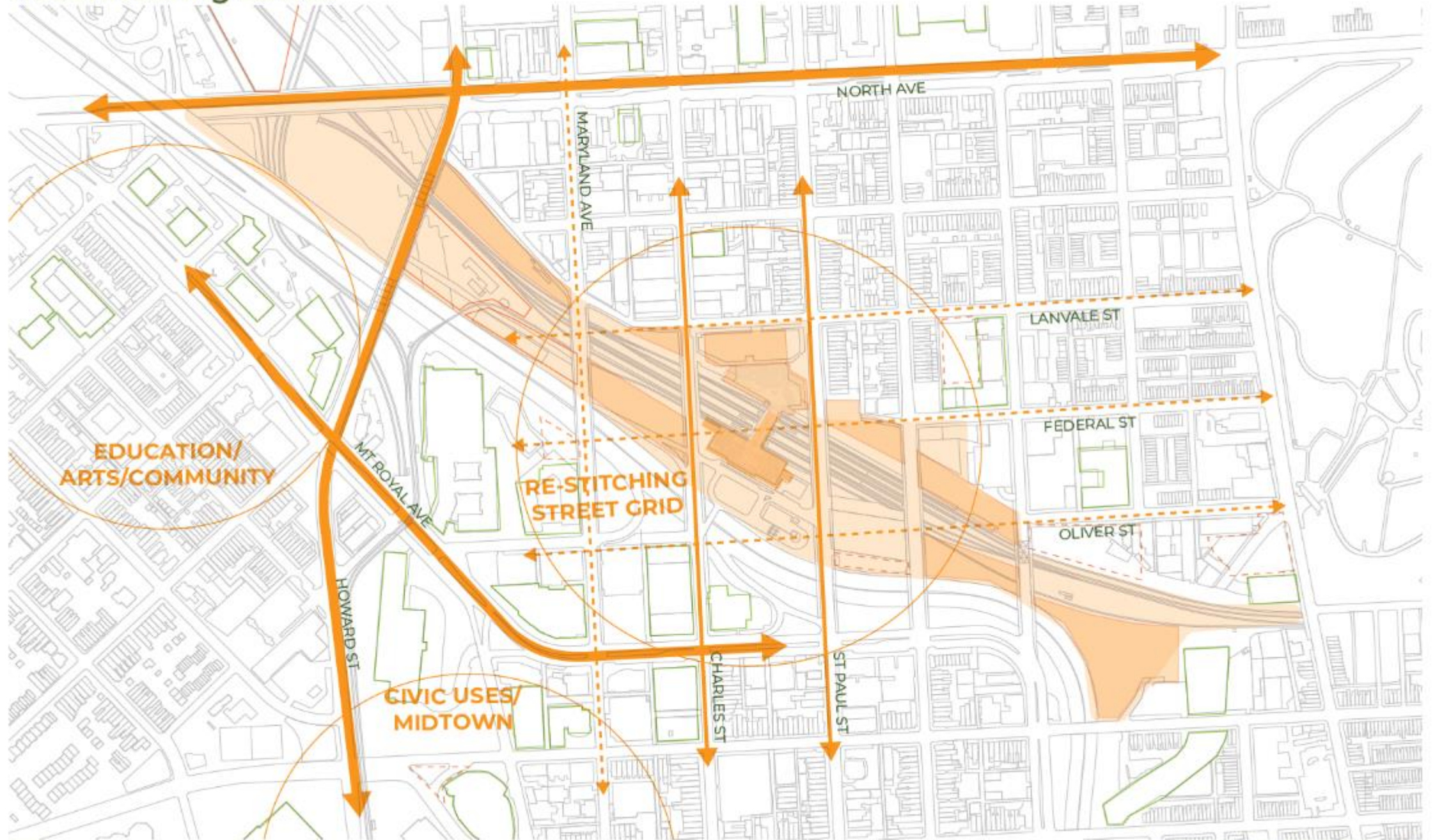
## Investment Summary

- Baltimore Penn Station = \$200 million+
- Frederick Douglas Tunnel = \$4 billion
- Other NE Corridor Improvements = \$12 billion
- New fleet of Acela trainsets = \$2.5B

*Amtrak Investments will allow for 30 min. peak headway trains to DC and NY, creating faster and more reliable service:*



# Reconnecting Zones





# Penn Station Partners Master Plan for Amtrak-controlled Property

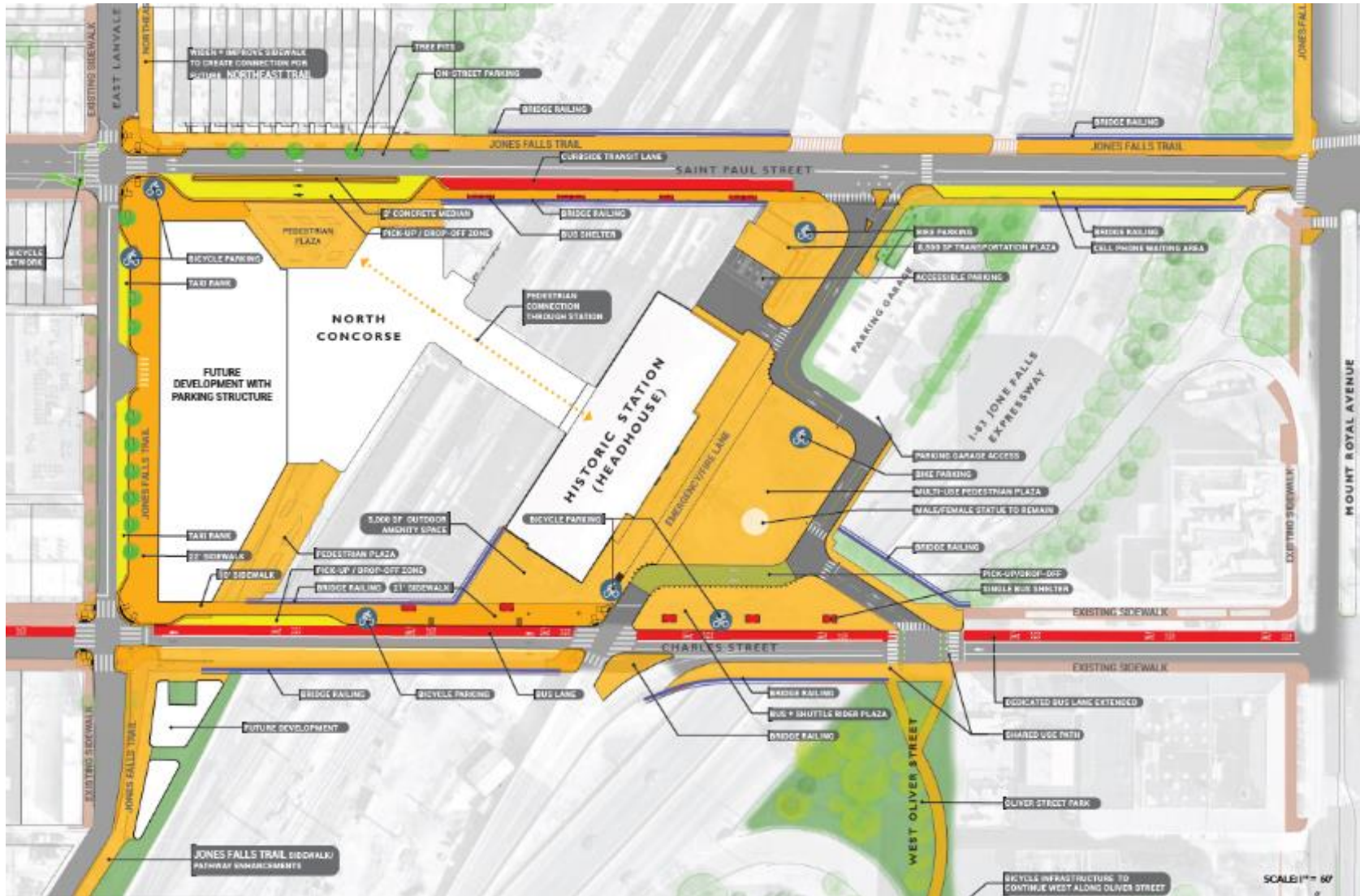


## Estimated Impact

- 3 million + SF of residential, office, retail, and hotel
- \$2 billion + of commercial investment
- Seeking over \$300 million of infrastructure and connectivity improvements

*The Green Line park connects North and Central Baltimore to the waterfront, creating an armature for development to coalesce*

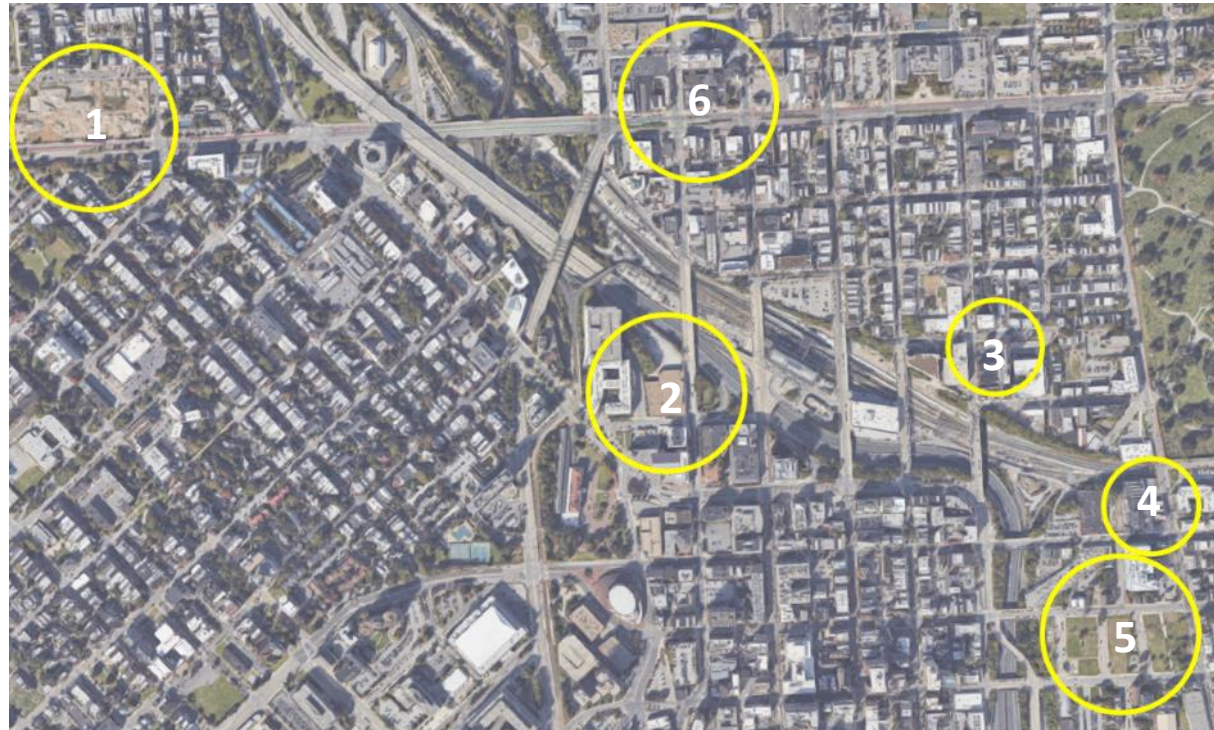
# Multi-Modal Connectivity



*The \$12M RAISE Grant will improve multi-modal access and pedestrian connectivity around Penn Station*



# Catalytic Private Development

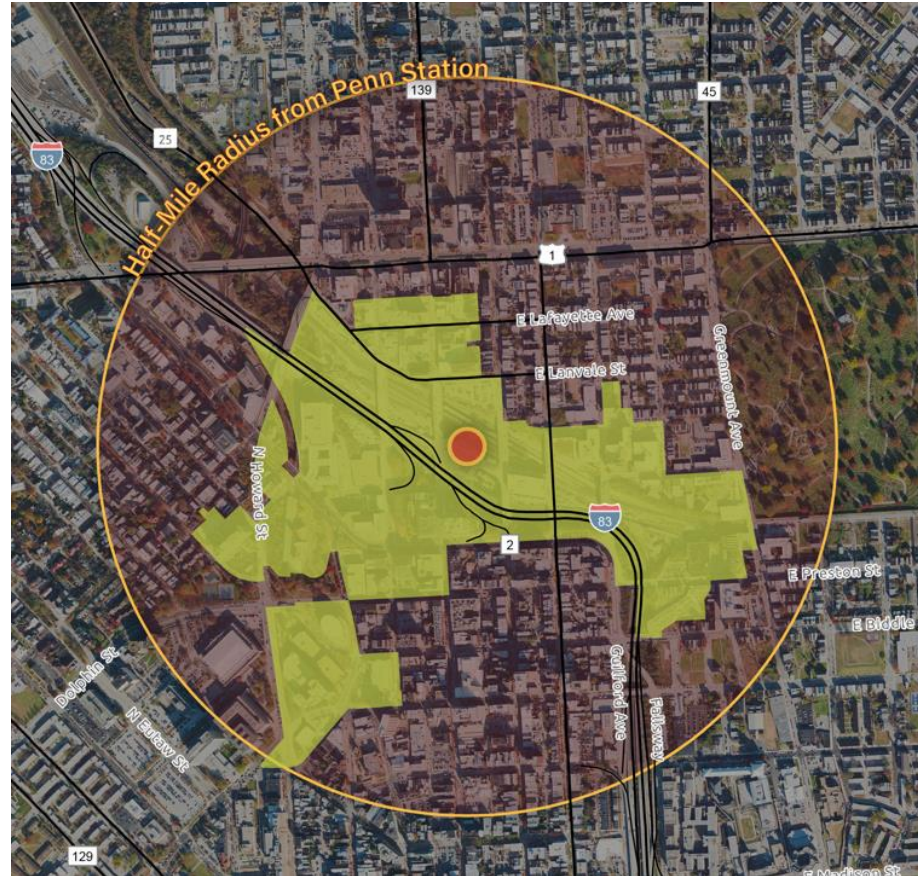


## Developments planned or in progress:

1. Reservoir Square (MCB) – 320 units, \$150M
2. Midtown Crossing (Zahlco) – 550 units, \$158M
3. Area 405 (Timshel/CSP) – Artist lofts and studios
4. Carehaus (Ernst Valery) – 21 units
5. Johnston Sq. Master Plan (ReBuild Metro) – 250,000 SF mixed use + park
6. Parlor + North Ave. Market (Timshel) – North Ave. retail corridor



# Penn Station as Maryland's Model Transit-oriented Development



*Expand TOD boundaries to encompass catalytic development sites, maximizing tax increment capture and extending TOD benefits*



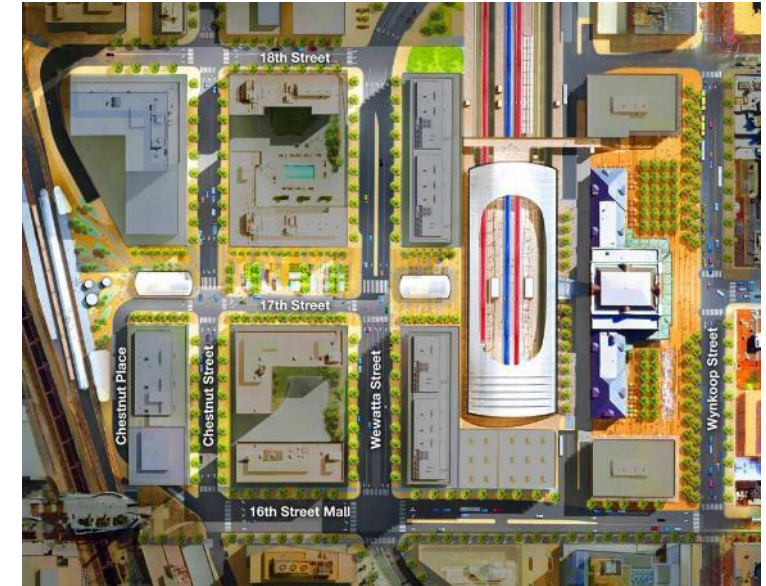
# Capturing additional TOD Opportunities for Infrastructure Funding



*Local/State TIF extending to capture range of increments (property, sales, income, entertainment/hotel taxes)*



*Leveraging Bipartisan Infrastructure Act to implement MDOT priority improvements*



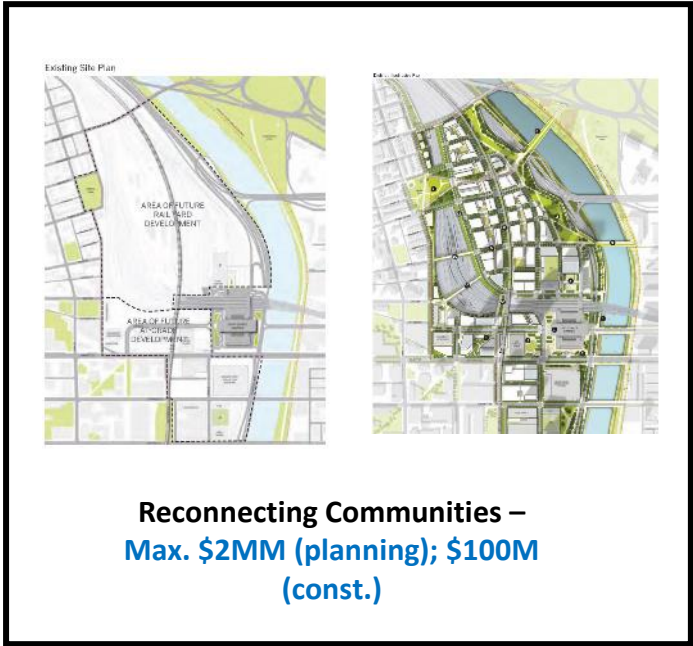
*TIFIA precedent: Denver Union Station*



# Funding the Transformation at Penn Station



Safe Streets For All / - Max. \$50MM



Reconnecting Communities – Max. \$2MM (planning); \$100M (const.)



Neighborhood Access and Equity



Transportation Set Asides - ~\$1MM



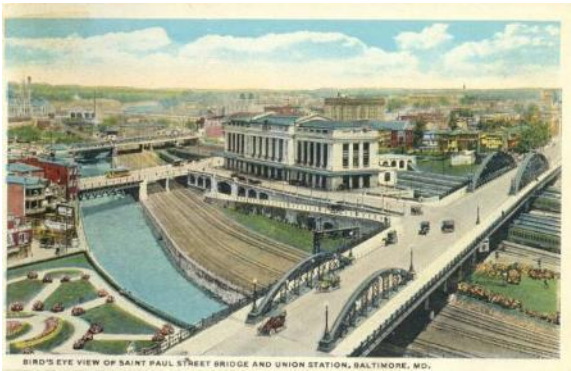
Strengthening Mobility and Revolutionizing Transportation (SMART) – max. \$2MM



All Stations Accessibility



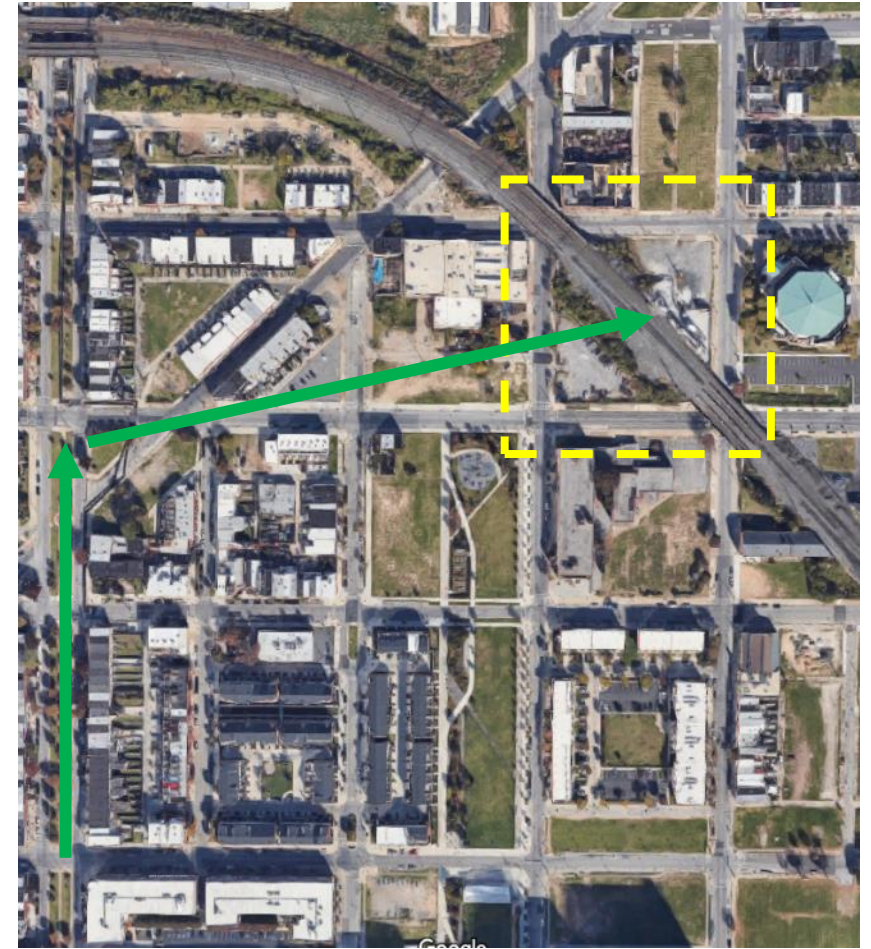
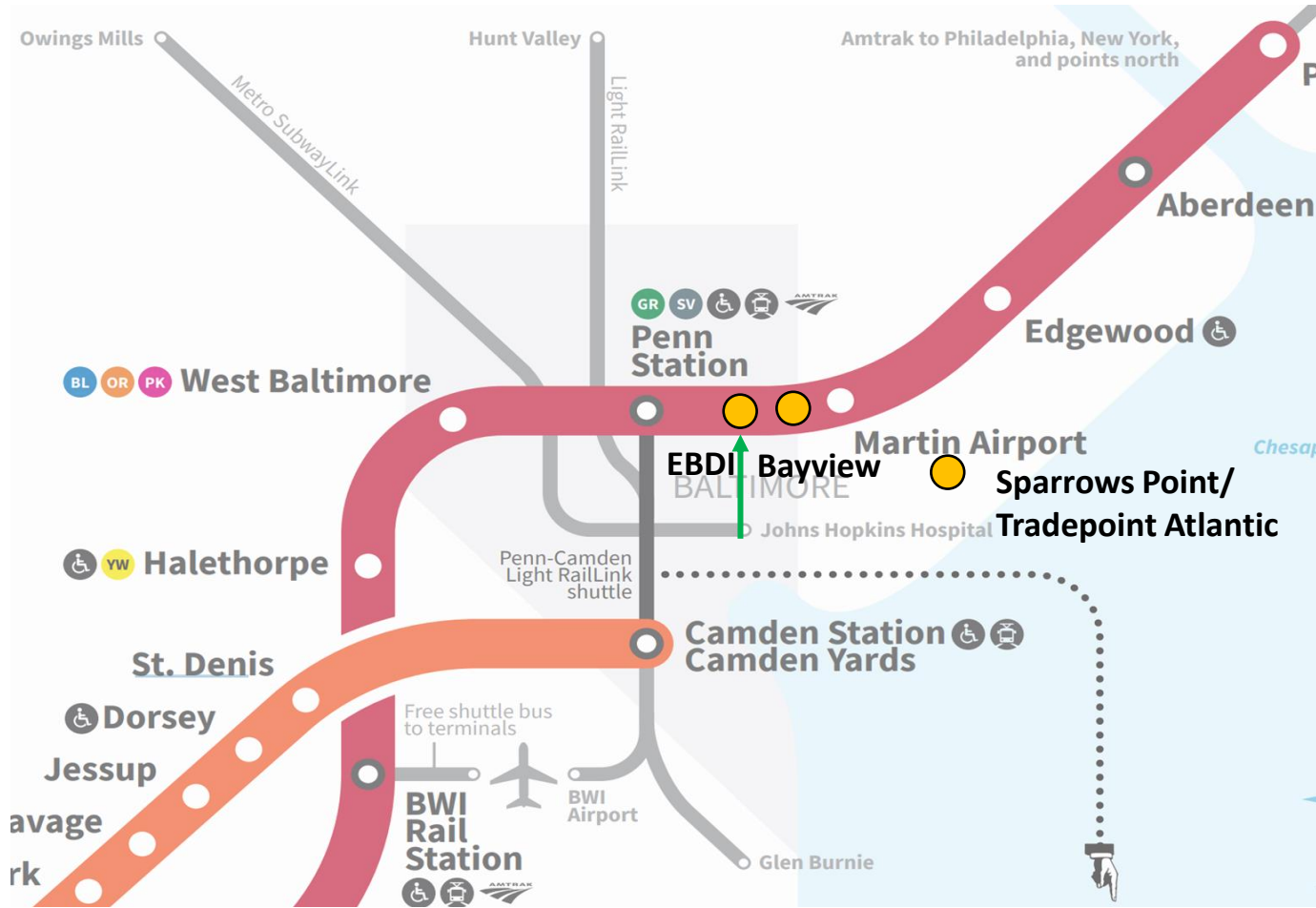
FTA Capital Investment Grant / HUD Block Grant



PROTECT



# Low-Hanging Fruit Transit Improvements: Silver Line Shuttle between BWI and Martin Airport



*Provide access to major employment centers for East and West Baltimore families without cars*

*New MARC EBDI station requires reconstruction of 120 year old Washington/Biddle St. bridge. Allows for connection to Subway Link on Broadway*



# Low-Hanging Fruit Improvements: Light Rail

## Did You Know?



There is a half-hourly Light RailLink connection between Penn Station, Camden Station, and the Light RailLink stations along Howard Street.

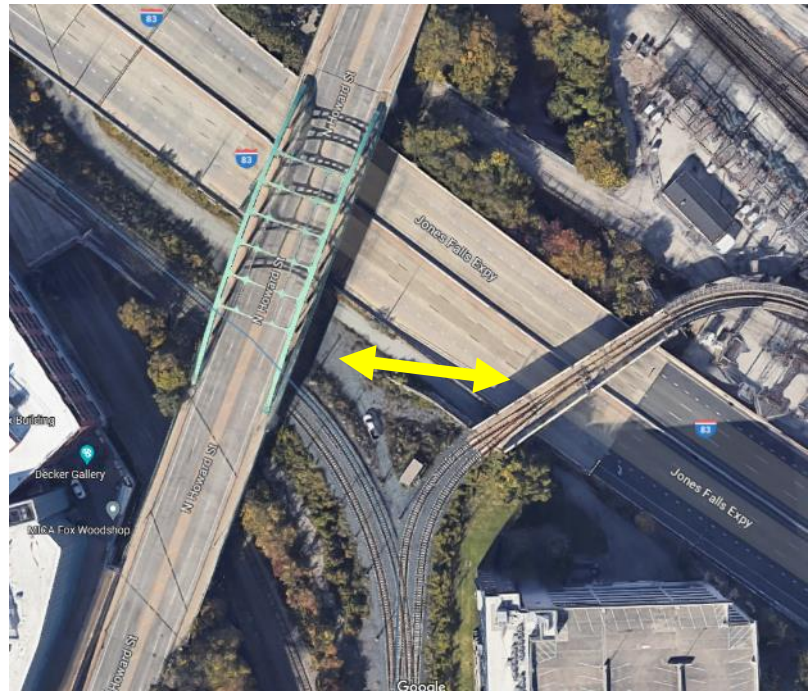
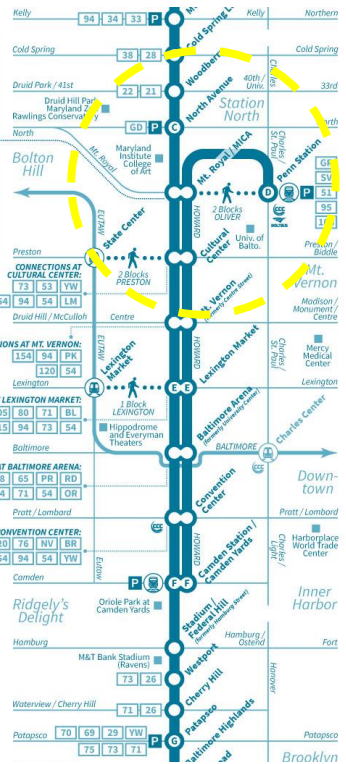
However, if you are traveling to Penn Station from further north or south, you can take Light RailLink to the Mt. Royal Station and simply walk the two blocks along Oliver Street to Penn Station.

Upon exiting Mt. Royal Station, walk south to Mt. Royal Avenue, then immediately turn east (left) and proceed on Oliver Street. Follow the Oliver Street sidewalk behind the University of Baltimore to Charles Street, then turn immediately north (left) on Charles Street. You will see Penn Station ahead of you.

See the detail map on the other side of this brochure for more information.

## Light RailLink Stations For Special Events

- Artscape:** Mt. Royal / MICA
- Baltimore Arena Events:** Baltimore Arena
- BSO Concerts and Performances at the Lyric:** Cultural Center
- Charm City Night Market:** Lexington Market



**Option A:** Northbound LRT Connection at BPS links mass transit line to MTA bus, regional MARC trains, and intercity rail

**Option B:** Automated people mover connects Mt. Royal LRT with Penn Station

\*Addition of service from Penn Station to Camden Line bolsters system robustness