



# What's New at BCDOT's Capital Planning Division?

Stu Sirota, AICP

Interim Deputy Director, Planning

Baltimore City Department of Transportation

# BCDOT Capital Planning Division

- Planning
  - Transportation Services
-

# Planning

---

# Planning Toward Zero



- Reduce number and severity of crashes
- Reduce deaths and injuries
- Most vulnerable roadway users
- Modeled after Vision Zero programs

Hit by a vehicle traveling at



Hit by a vehicle traveling at



Hit by a vehicle traveling at



A pedestrian struck by a vehicle traveling at

**20 m.p.h.**

**is nearly 2/3 less likely to be killed**

compared to a pedestrian struck by a vehicle traveling at 30 m.p.h.



# Planning Toward Zero

- Safe Streets for All (SS4A) USDOT Grant Program
  - BCDOT awarded \$1M SS4A Action Plan grant in FY 22
  - Followed by \$9.9M SS4A Demonstration grant in FY 23

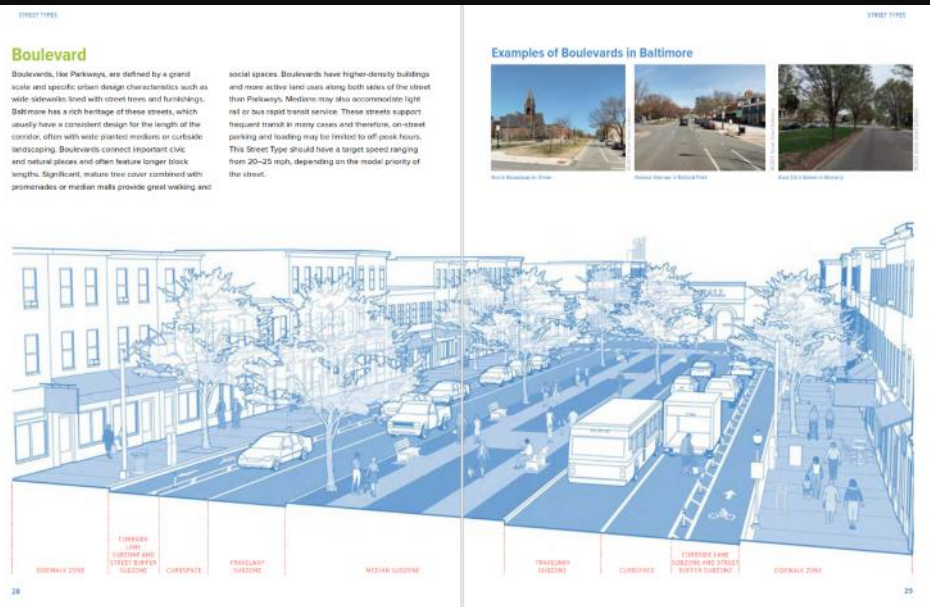
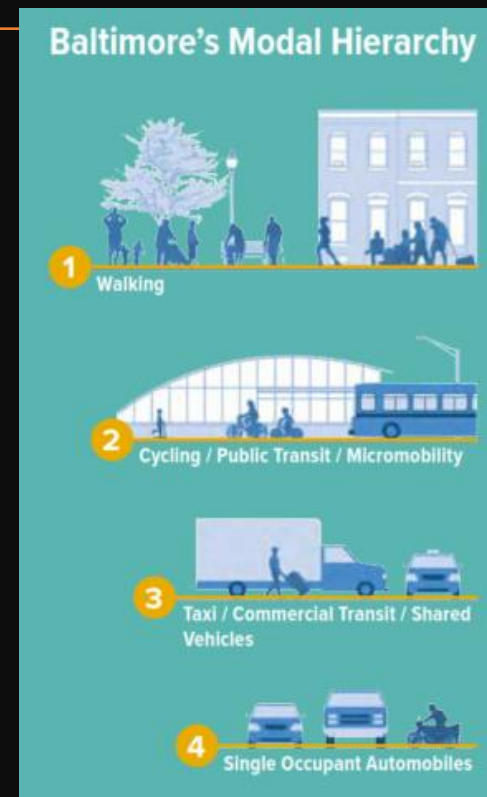
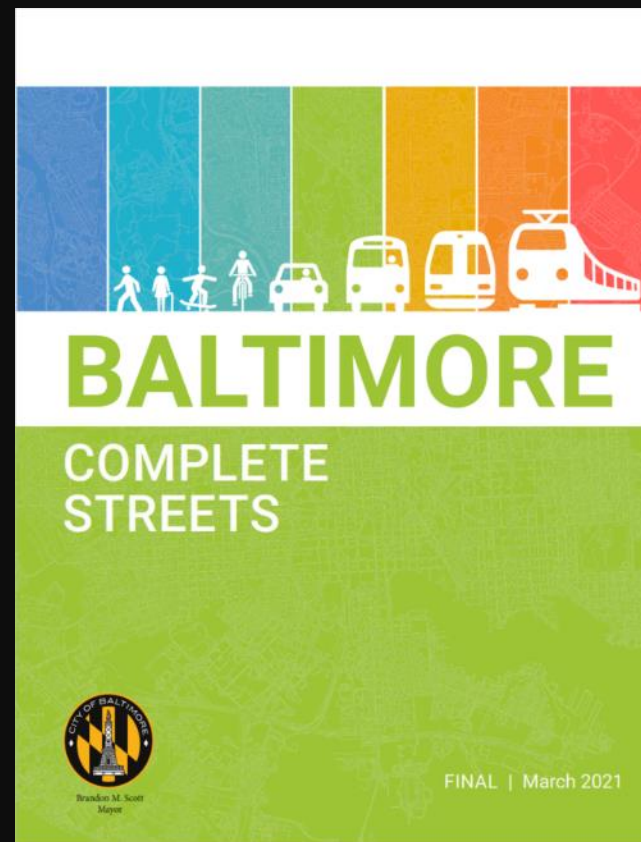




# Planning

## Complete Streets

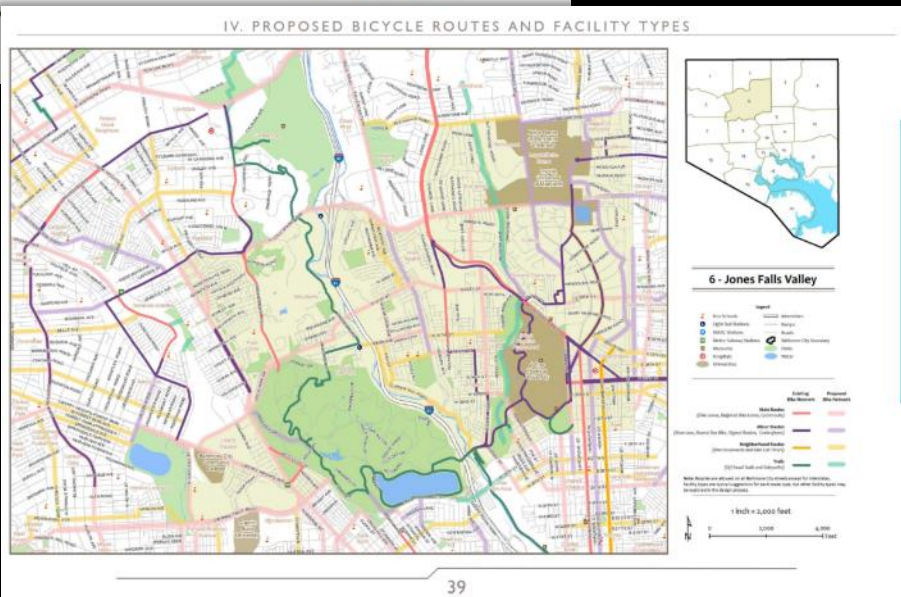
- Complete Streets Ordinance 2018
- Complete Streets Manual 2021





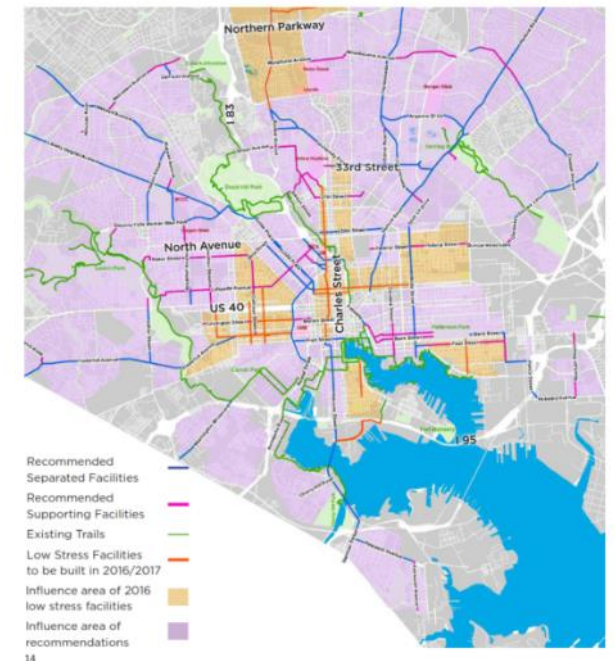
# Planning Bike Program

- 2015 Bike Master Plan
- 2017 Addendum



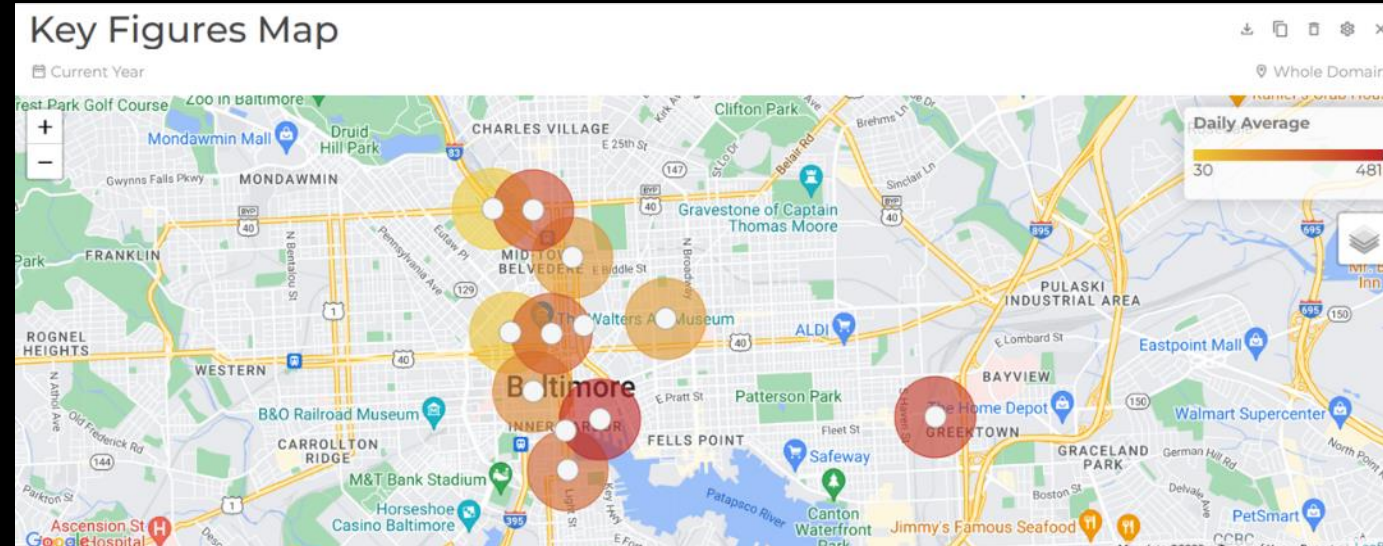
## Influence of Recommendations

The purple shaded areas on the map below indicate the potential influence of implementing the recommendations on the previous page. If the recommended facility were constructed on every corridor, a person on a bike starting anywhere in the purple shaded zone could reach any other place within that shaded zone without having to ride on a high stress roadway. Additional facilities to connect remaining disconnected neighborhoods to the low stress bike facility network will be planned for future years.



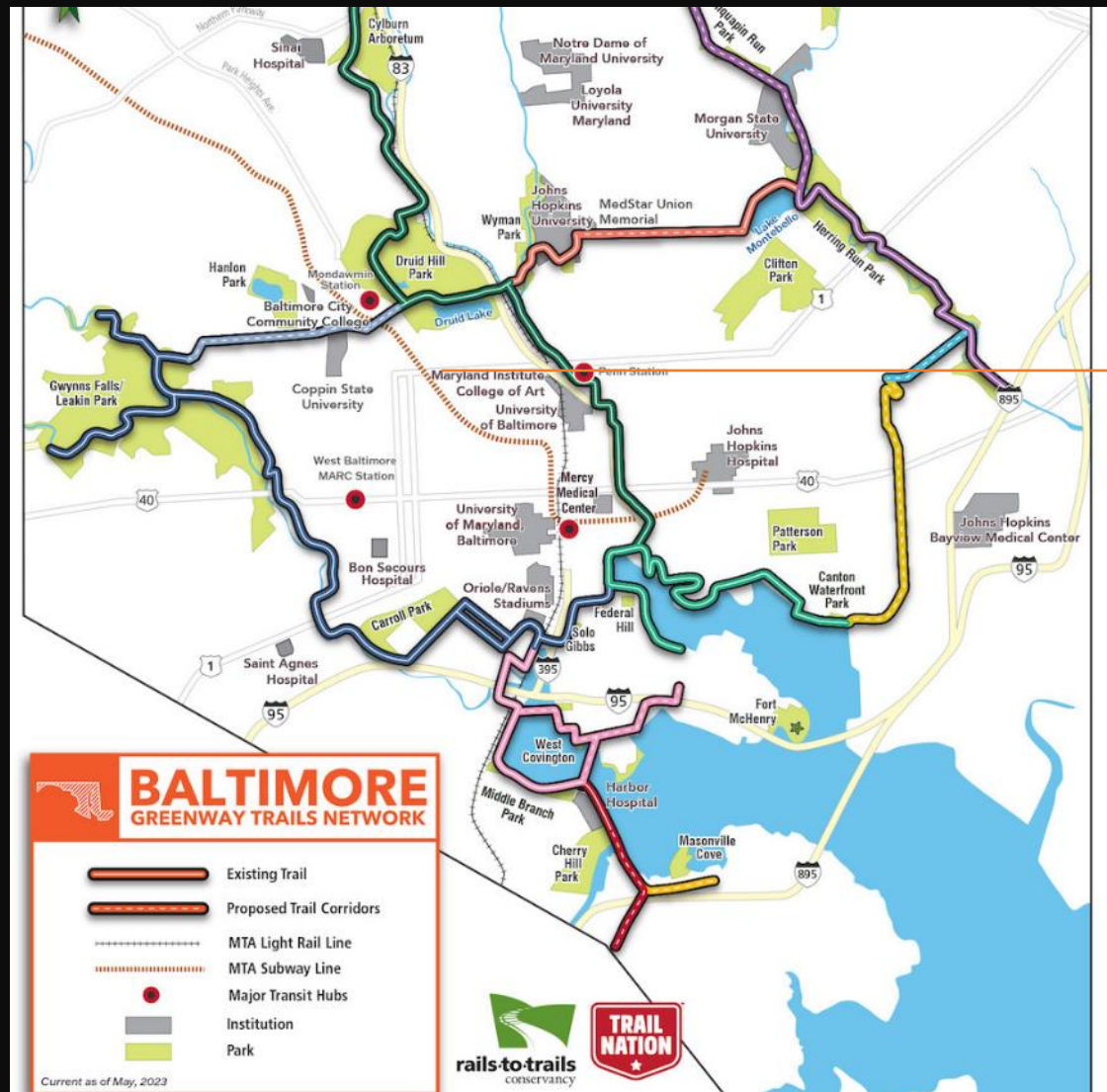


# Planning Bike Program





# Planning Baltimore Greenway Trails Network

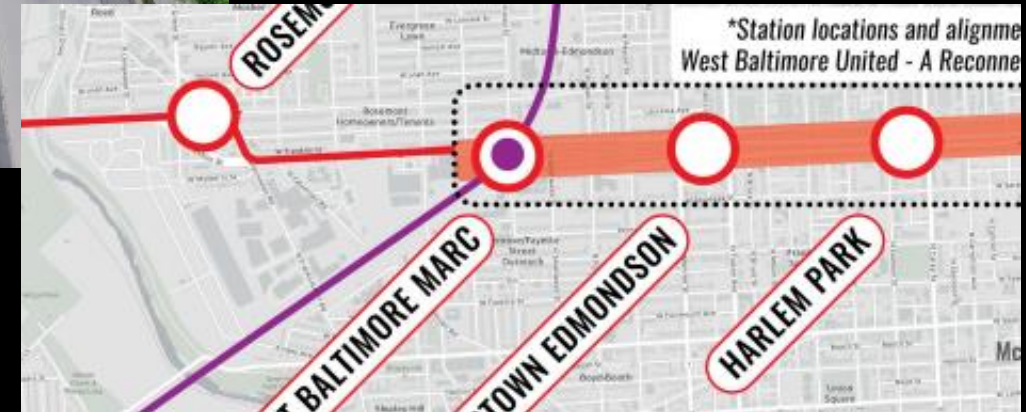




# Planning

## Grants and Special Projects

- West Baltimore United Reconnecting Communities
- Red Line
- RAISE Penn Station
- RAISE East-West Transit Improvements
- RAISE Mondawmin
- Frederick Douglass Tunnel Replacement
- Falls Road/Northern Parkway Corridor Plan
- Inner Harbor Plans



# Planning

## Planning coordination and support

- Community Placemaking
- Streetscape design
- Neighborhood Traffic Calming
- Safe Route to School (SR2S)





# Transportation Services

---

# Transportation Services

## Charm City Circulator

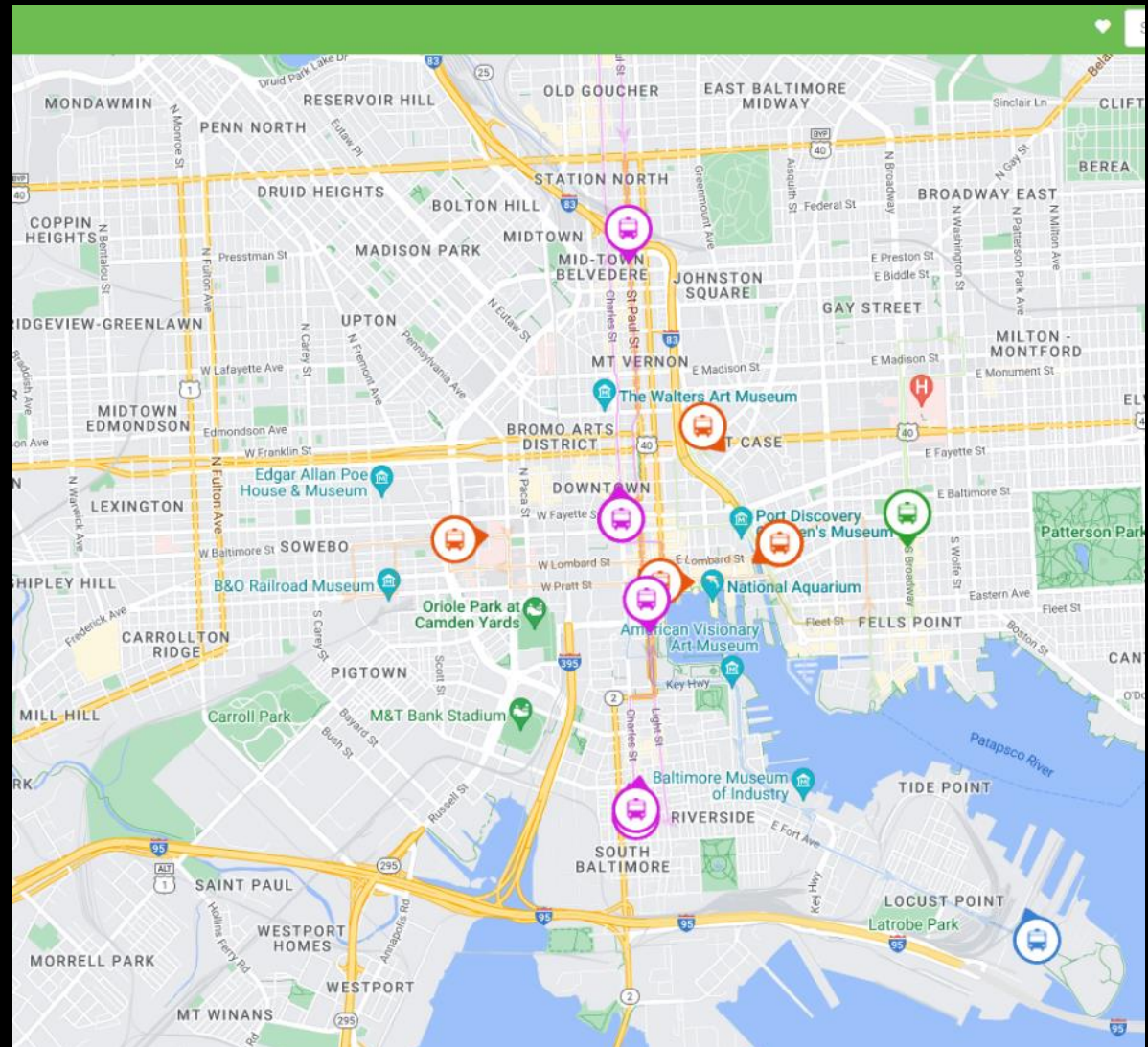
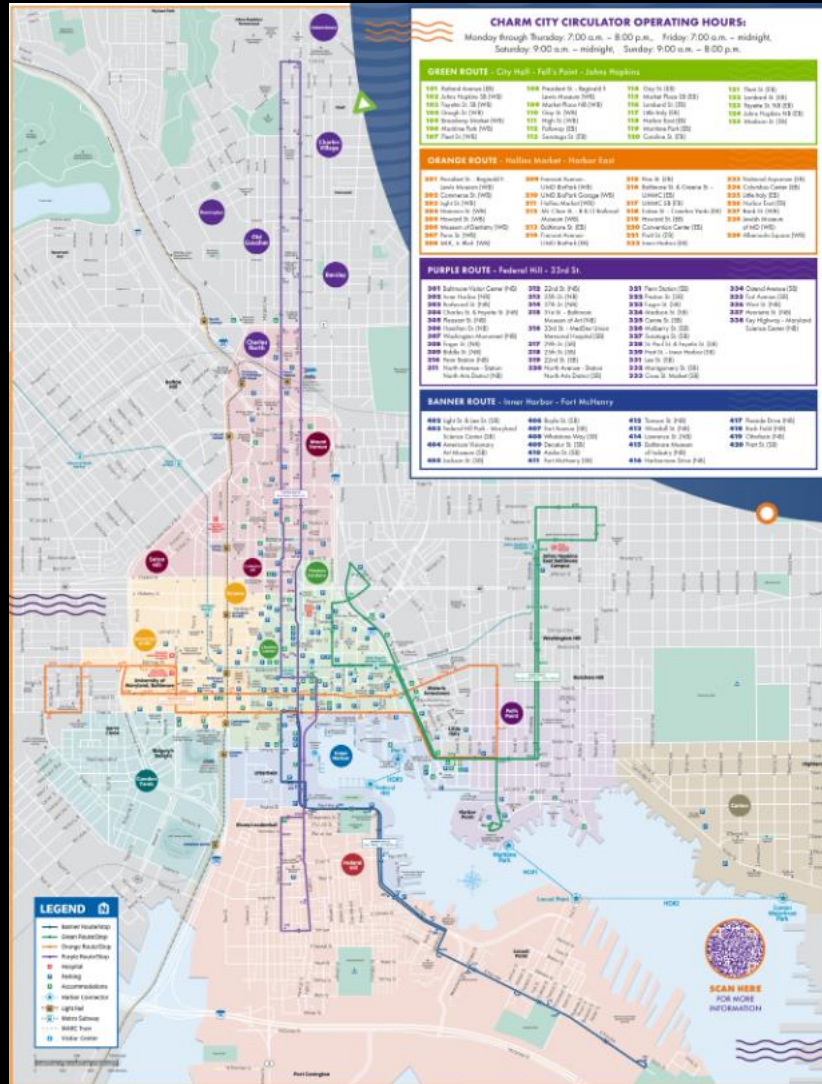
- Free service, which began in 2010.
- Fleet of 23 buses, with 16 operated in maximum service.
- A new contractor, Transdev, took over the service in January 2023. Resulted in dramatic improvements to performance and operations.
- 2023 Vehicle Revenue Miles: 242,495
- 2023 Unlinked Passenger Trips: 1,101,983
- Plans to purchase 7 new buses.





# Transportation Services

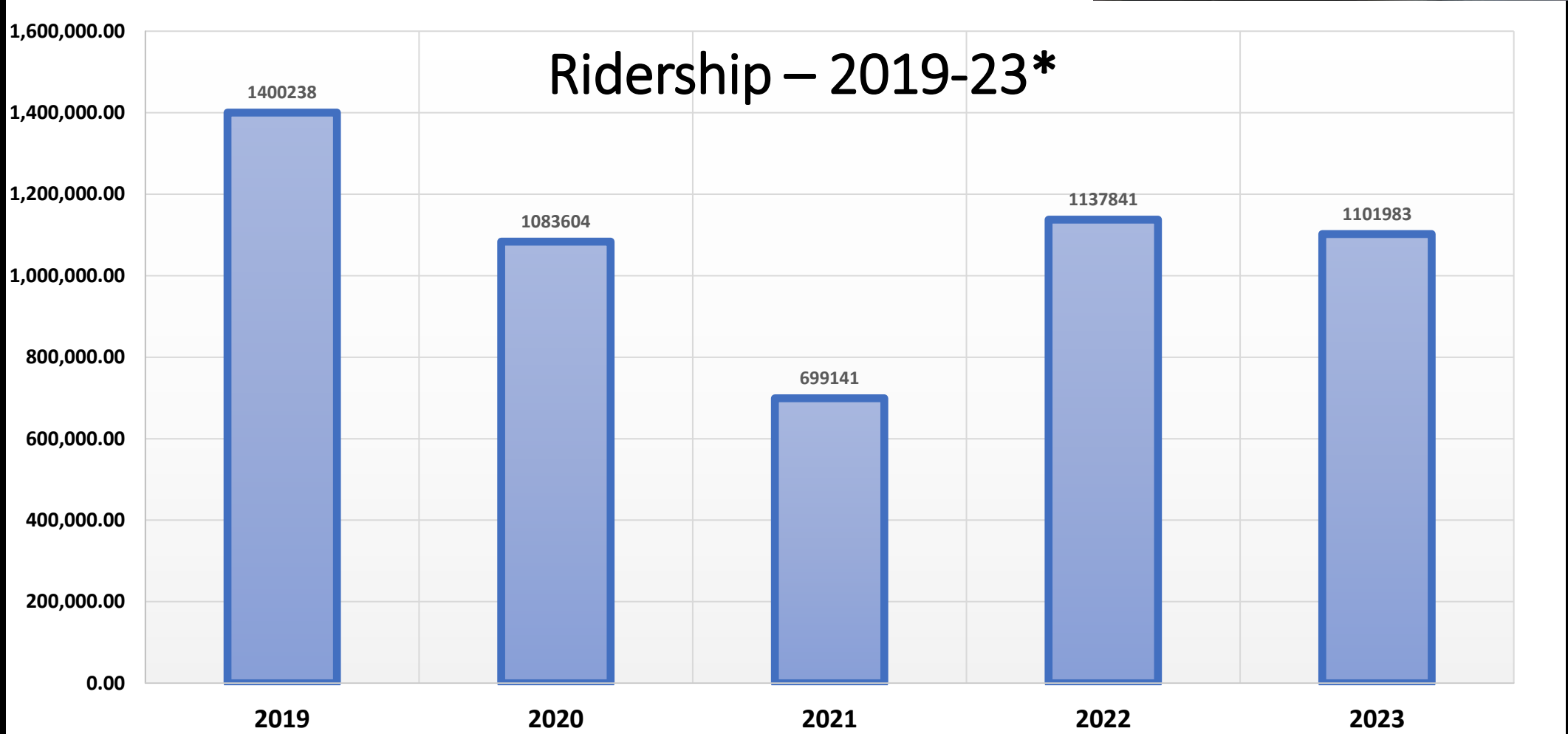
## Charm City Circulator





# Transportation Services

## Charm City Circulator



*\*2023 ridership through November*

# Transportation Services

## Harbor Connector

- Free commuter-oriented service for passengers, Monday Through Friday
- Operated by Harbor Boating with a fleet on 3 vessels on 3 routes



# Transportation Services

Not to be confused with the tourism-oriented Water Taxi

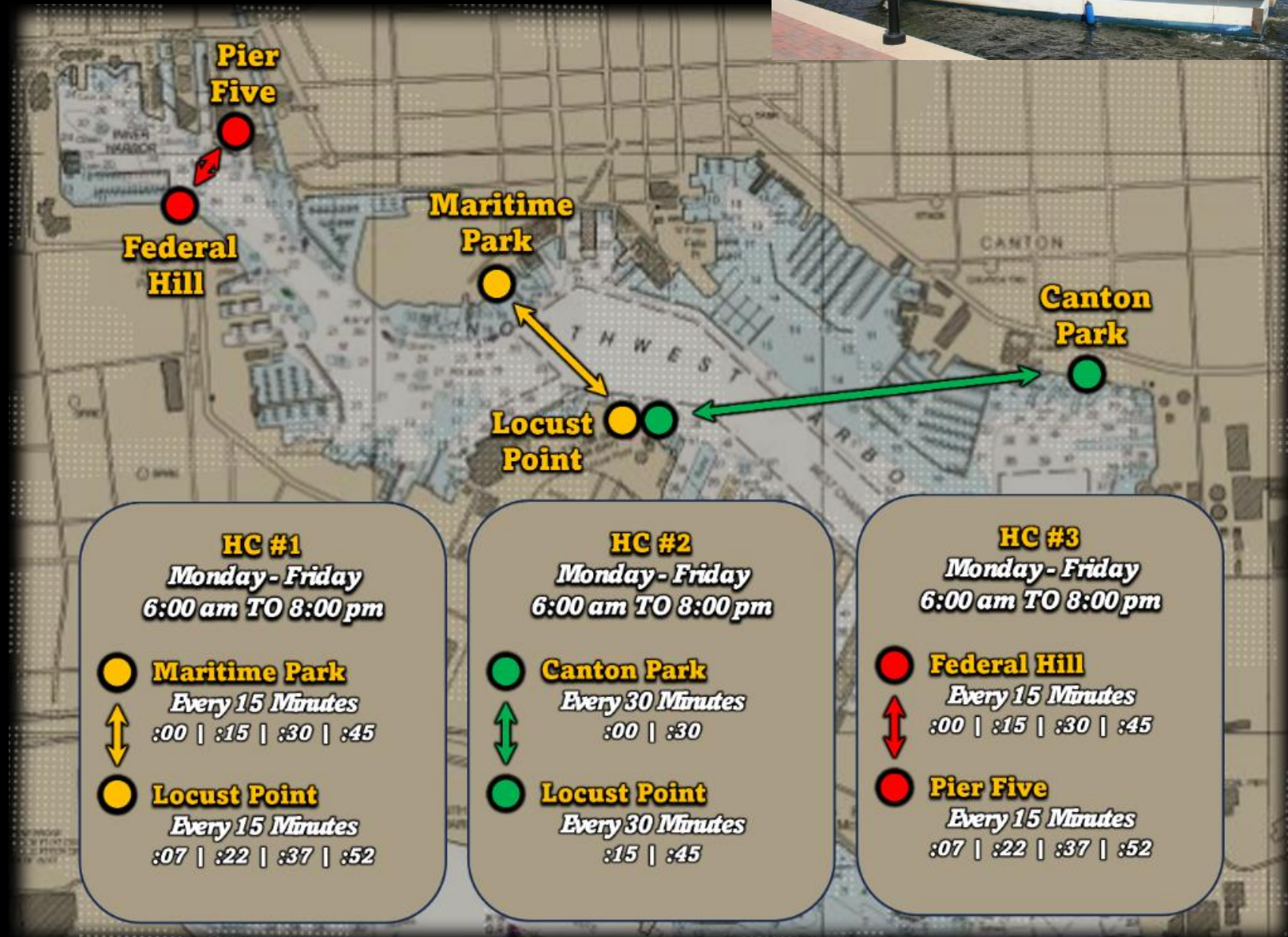




# Transportation Services

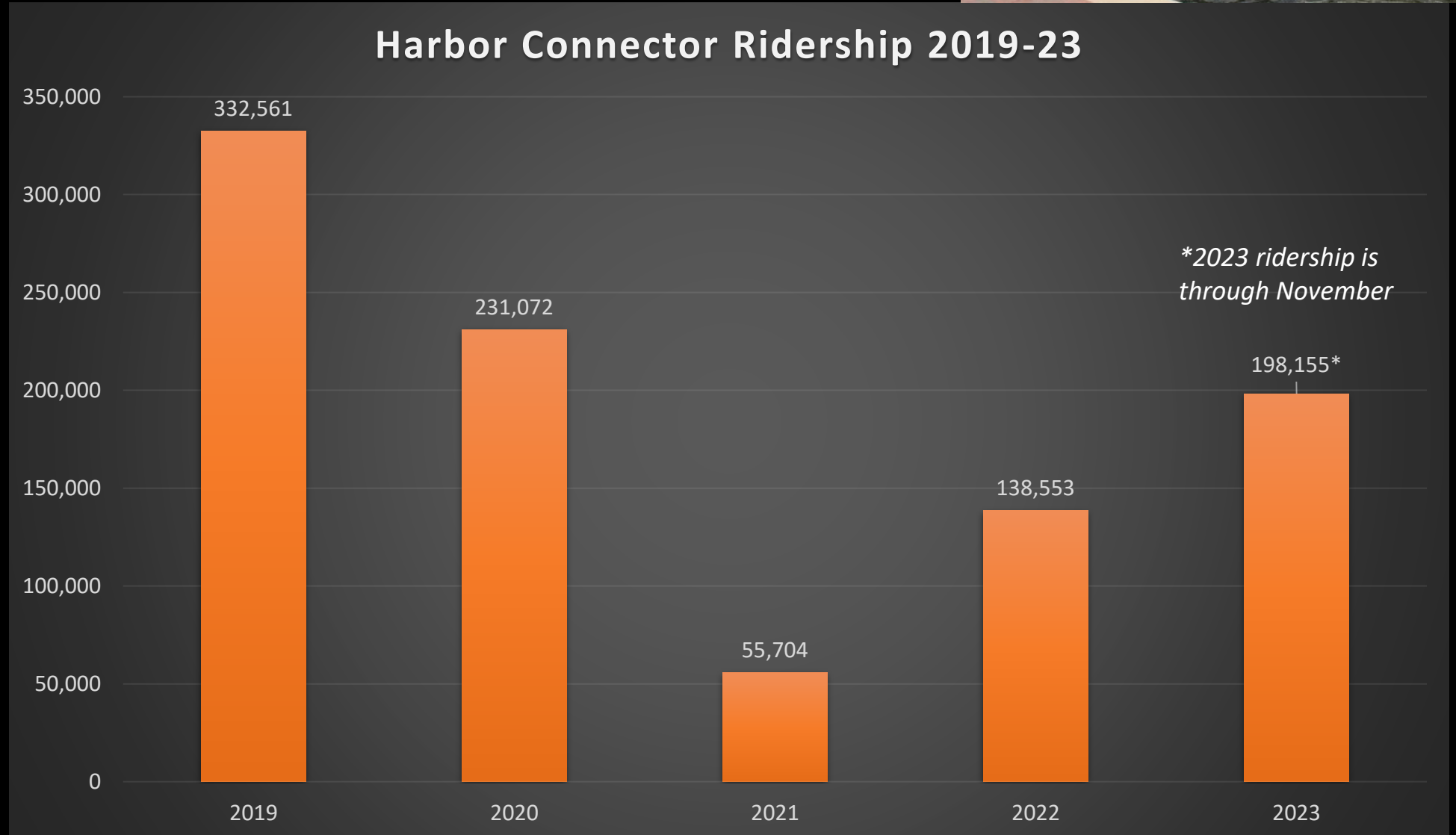
## Harbor Connector

- Nearly 200,000 rides so far in 2023.
- \$5M Federal grant awarded in 2023 to modernize and expand fleet, build new terminals and docks



# Transportation Services

## Harbor Connector





# Transportation Services

## Dockless Vehicle (Micromobility) Program





# Transportation Services

## Dockless Vehicle (Micromobility) Program

### **Superpedestrian (Link)**

- 2000 e-scooters
- Adaptive vehicles



### **Spin**

- 2800 e-scooters
- 150+ e-bikes



# Transportation Services

## Dockless Vehicle (Micromobility) Program

### Equity Plans

- Low-income
- Non-smart phone
- Cash payment

### Equitable Distribution

- **Deployment Zones** - A provider cannot deploy less than 5% of the fleet or more than 25% of the fleet in one deployment district.
- **Equity Zones** - Each equity zone is checked to make sure that there are at least 3 vehicles present at the site (or 4 Vehicles for providers with two or more vehicle types) for at least one hour for each day in the evaluation period.

**LOW-INCOME MICROMOBILITY PLANS**

DID YOU KNOW THERE ARE DISCOUNTED PLANS (UP TO 70% OFF) FOR RIDING E-SCOOTERS, AND E-BIKES FOR LOW-INCOME RESIDENTS?

**LINK** SEATED E-SCOOTERS & E-BIKES

**YOU NEED:**

- A PHOTO ID
- A SNAP CARD, UTILITY BILL, MEDICAID INSURANCE CARD, OR REDUCED FARE CARD

**SIGN UP:**  
a1table.com/shr95qDUibN1azFco

**NEED HELP?**  
1.844.701.8163  
SUPPORT@LINK.CITY

**SPIN** E-SCOOTERS & E-BIKES

**YOU NEED:**

- PROOF OF ADDRESS (BILL)
- A SNAP CARD, UTILITY BILL, MEDICAID INSURANCE CARD, OR REDUCED FARE CARD

**SIGN UP:**  
web.spin.pm/spin\_access/usa

**NEED HELP?**  
1.888.362.5189  
SUPPORT@SPIN.PM

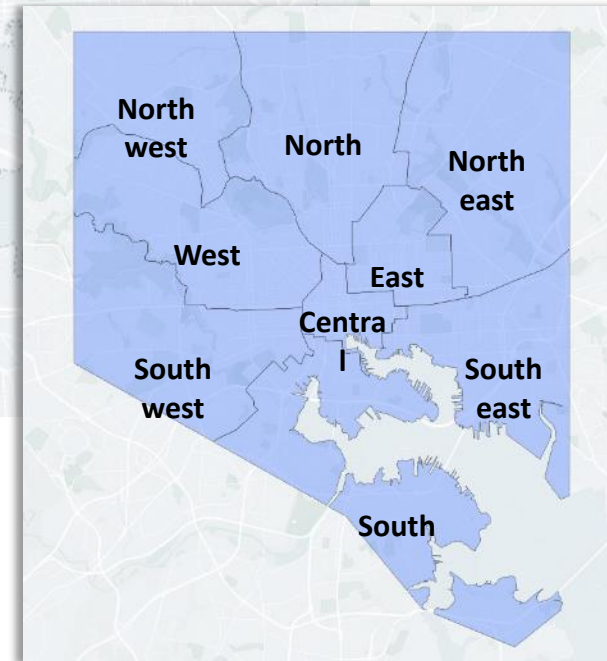
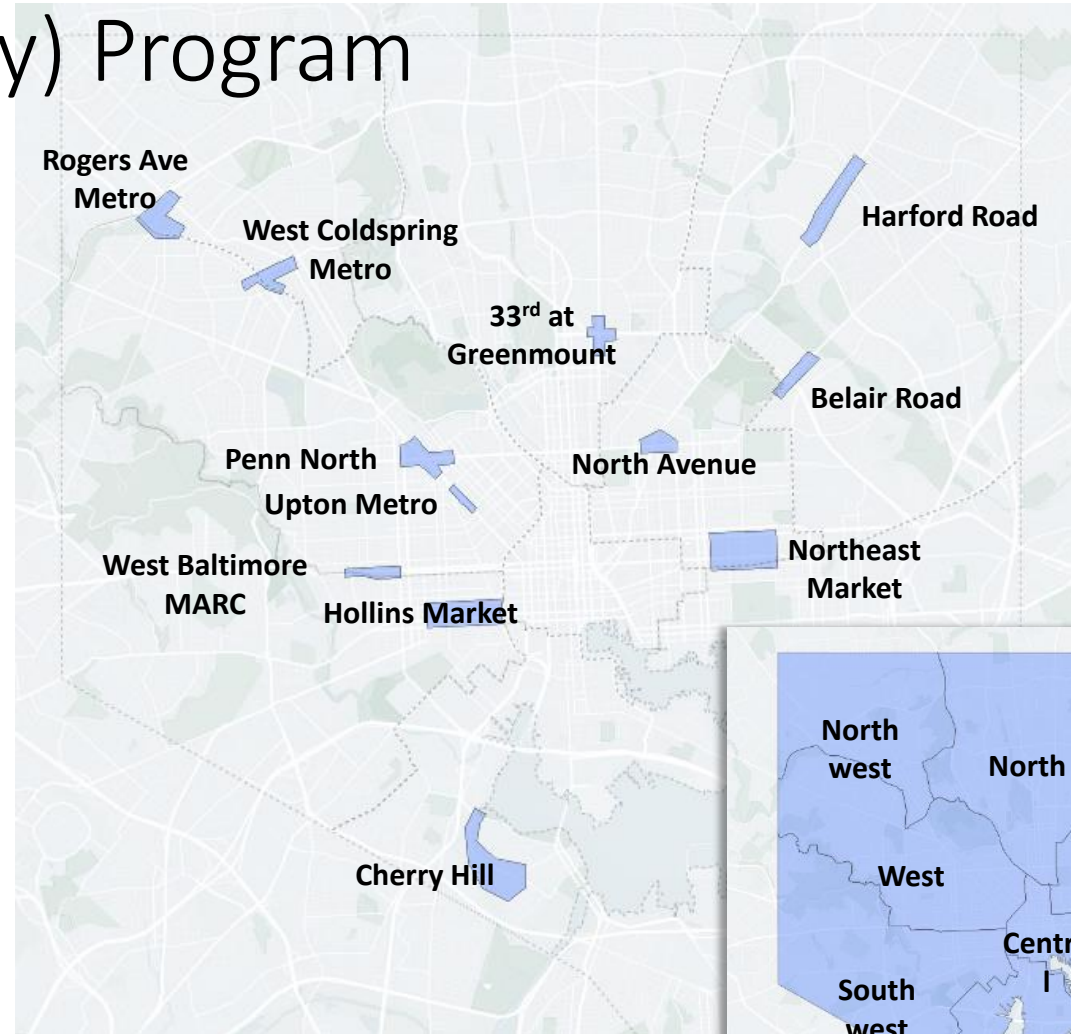
**dot** @BMORECITYDOT ●●●●●●●● TRANSPORTATION.BALTIMORECITY.GOV

# Transportation Services

## Dockless Vehicle (Micromobility) Program

### BCDOT compliance requirements:

- A permit holder must deploy a minimum of 5% and a maximum of 25% of their fleet to each deployment district.
- A permit holder must deploy a minimum of three dockless vehicles to each equity zone.
- A permit holder shall have no more than 5% of a dockless vehicle fleet parked for longer than 5 days from April 1<sup>st</sup>-November 30<sup>th</sup> and 10% from December 1<sup>st</sup>-March-31<sup>st</sup>.
- A permit holder must be within 90% compliance to be eligible for a fleet increase.

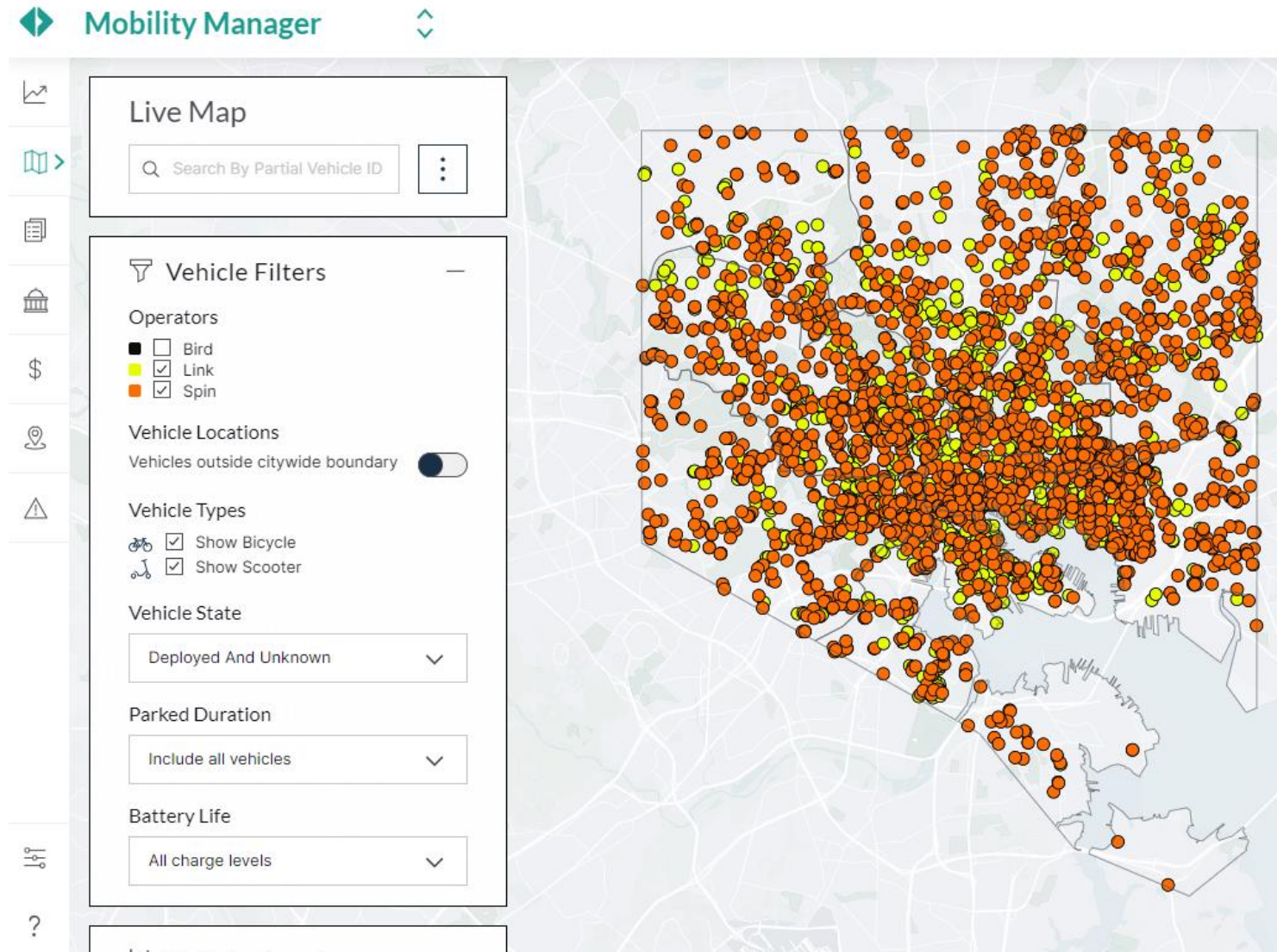




# Transportation Services

## Dockless Vehicle (Micromobility) Program

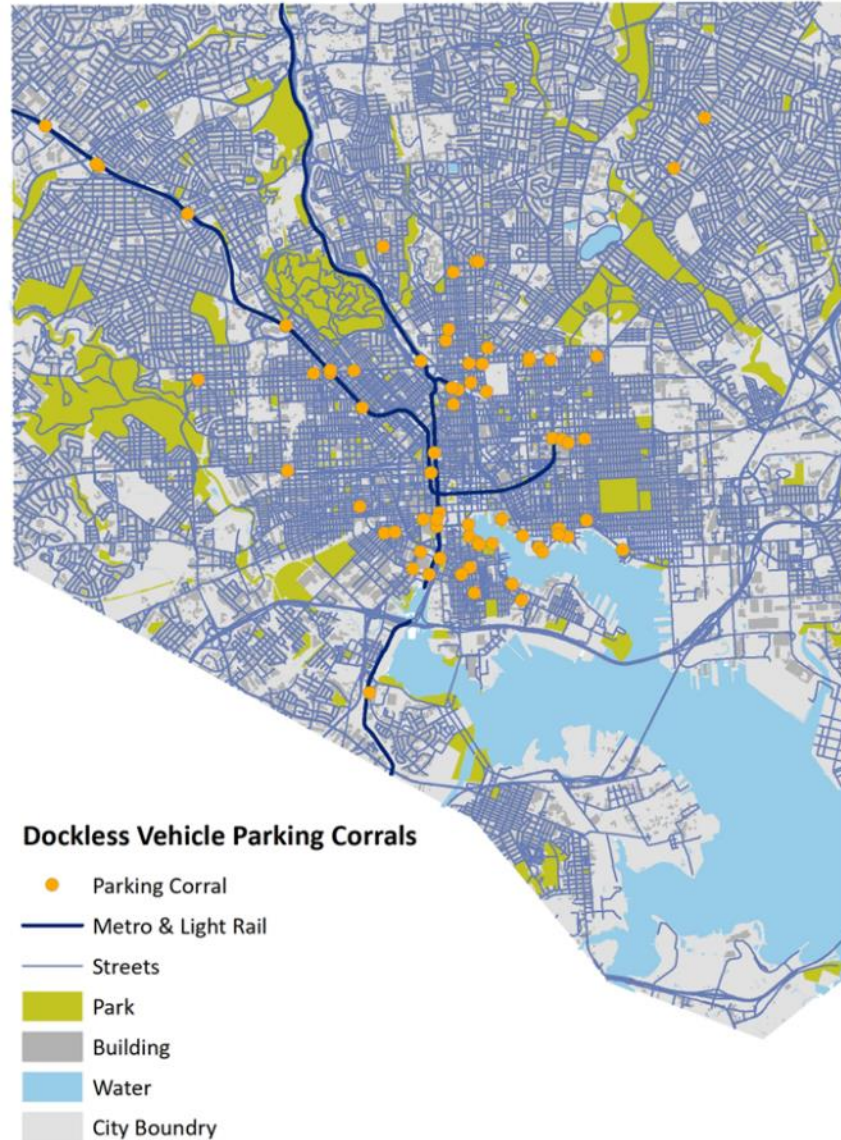
### Performance Monitoring



# Transportation Services

## Dockless Vehicle (Micromobility) Program

### Scooter Corrals





# Transportation Services

## Dockless Vehicle (Micromobility) Program

### No Parking Zones

Users cannot park in these areas:

- Waterfront
- University of Maryland Hospital – ER entrances
- Other locations as needed



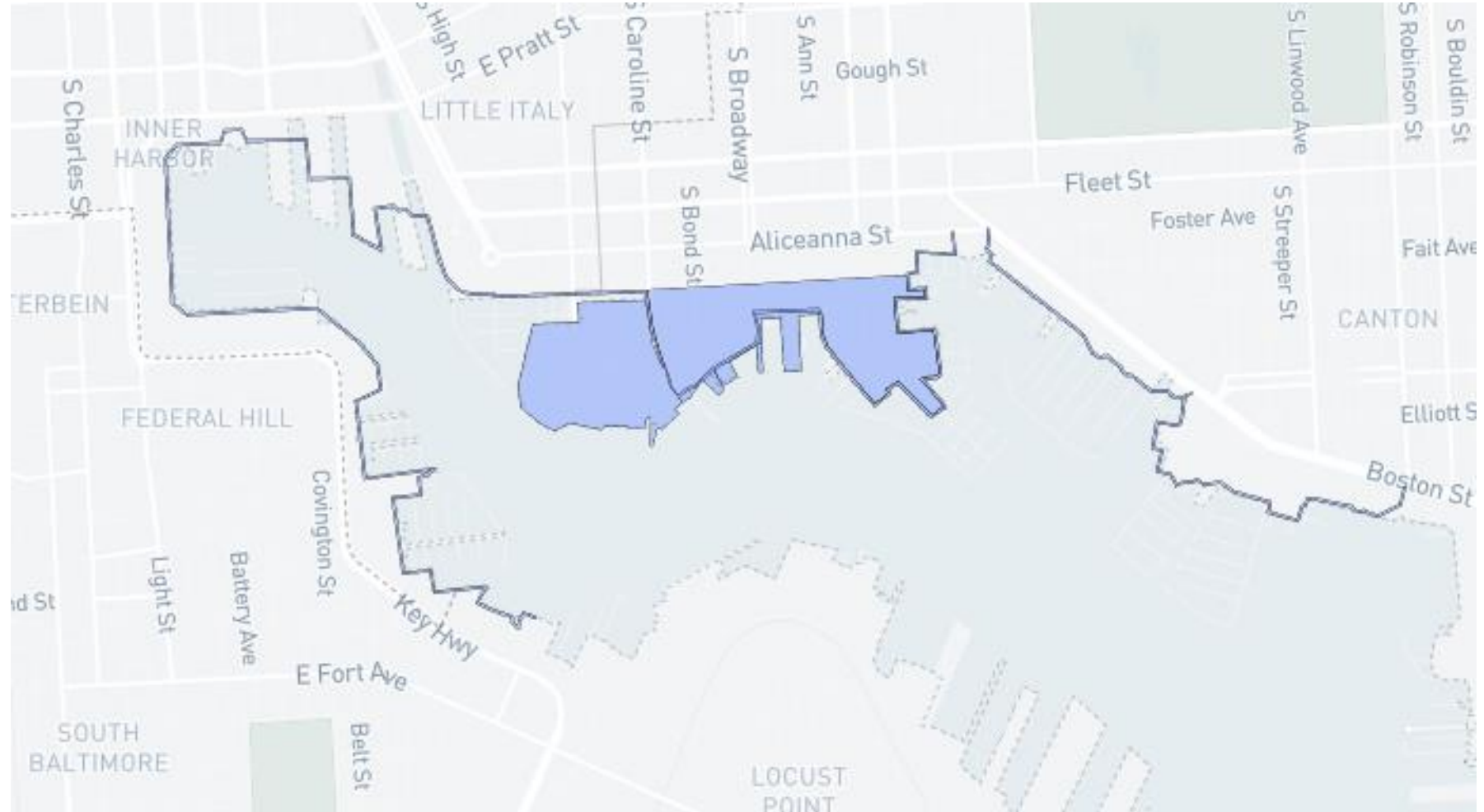
# Transportation Services

## Dockless Vehicle (Micromobility) Program

### Slow Zones

Vehicles reduce speed to 8 MPH:

- Waterfront
- Fells Point (cobblestone streets)

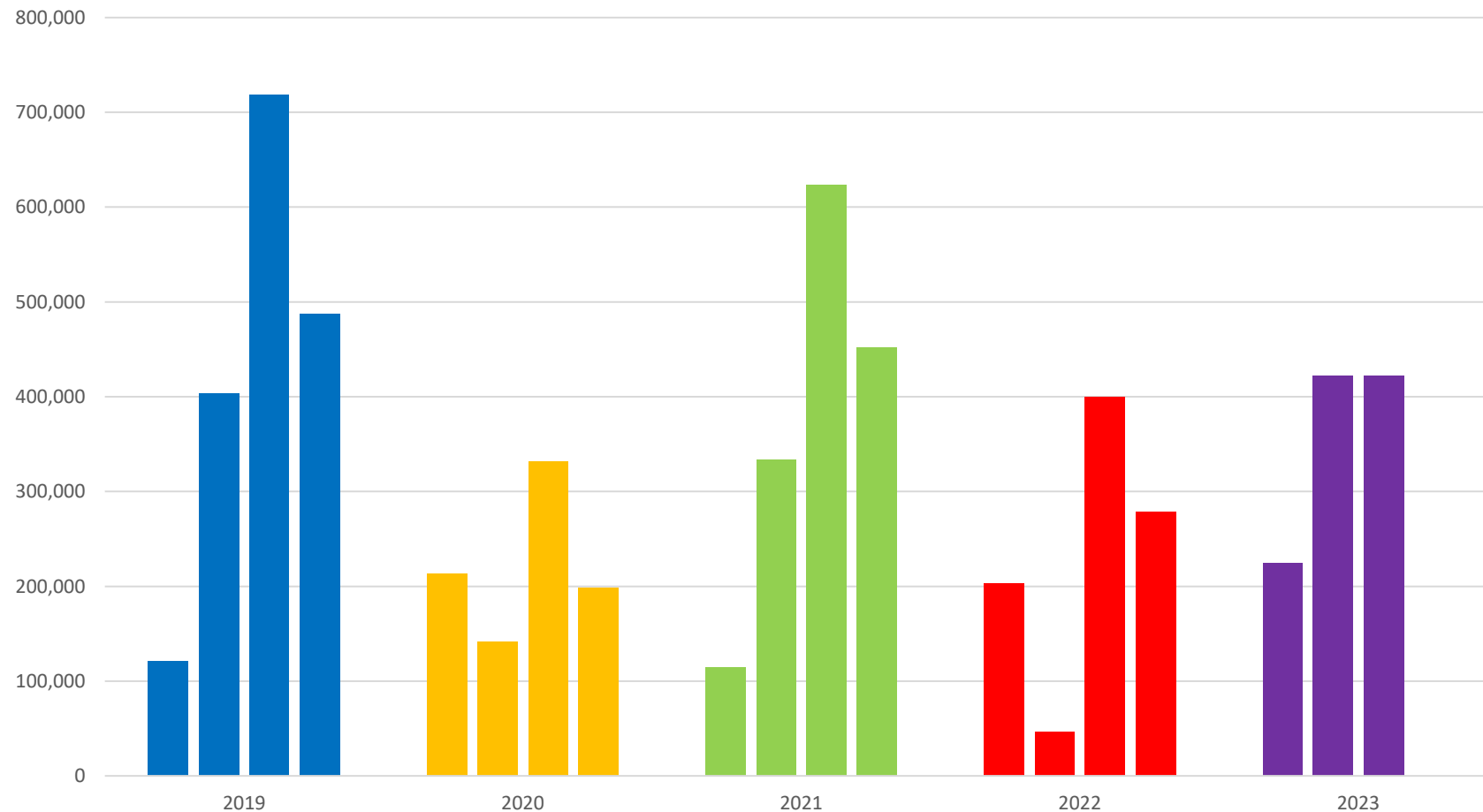




# Transportation Services

## Dockless Vehicle (Micromobility) Program

### Quarterly Dockless Vehicle Ridership 2019-2023





[www.streetsofbaltimore.com](http://www.streetsofbaltimore.com)

Questions?

Stu Sirota, AICP

Interim Deputy Director for Planning  
Baltimore City Department of Transportation  
[stuart.sirota@baltimorecity.gov](mailto:stuart.sirota@baltimorecity.gov)